

**APPENDIX G
ENVIRONMENTAL
JUSTICE REPORT**

Environmental Justice and Community Impact Issues

US 41A, Green Street in Henderson

Six Year Plan Item No. 2-140



Prepared By:

**Green River Area Development District
3860 US 60 West
Owensboro, KY 42301**

Table of Contents

	Page
Study Findings / Study Area	1
Study Findings / Population by Race	1
Study Findings / Population 65 and over	2
Study Findings / Population by Disability	2
Study Findings / Population by Poverty Level	3
Conclusion	4

Appendice

Appendix A - Community Leaders

Appendix B - Census Tracts and Block Groups (Maps)

Study Area

Population Black or African American Only

Population Hispanic or Latino

Population 65 years and Over

Population by Disability

Population by Poverty Level

Appendix C – Census Tracts and Block Groups (Table)

**Environmental Justice and Community Impact Issues
US 41A, Six Year Plan Item No. 2-140, Green Street in Henderson**

Identification of Community leaders or other contacts who may be able to represent population groups:

- See *Appendix A*.

Comparison of the Census tracts and block groups encompassing the project area to other nearby Census tracts and block groups, county, state, and United States percentages:

- Notable conclusions of Tracts and Blocks located along US 41A, Green Street in Henderson between the milepoints of 13.325 and 17.390:
 - The defined study area encompasses portions of 10 Block Groups within 8 Census Tracts. The Census Tracts and Block Groups are listed below. (*Appendix B* includes maps). Detailed data of Census Tracts and Block Groups are located in *Appendix C* of this document.

Henderson County

Census Tract: 201
Block Group: 1

Census Tract: 205
Block Group: 2

Census Tract: 202
Block Group: 1

Census Tract: 206.01
Block Group: 2 & 3

Census Tract: 203
Block Group: 1

Census Tract: 206.02
Block Group: 1

Census Tract: 204
Block Group: 1 & 2

Census Tract: 209
Block Group: 3

- Population by Race
 - Henderson County's overall population by race percentages are lower than both the United States and Kentucky averages. However, there are 6 Census Tracts and 8 Block Groups within the study area that warrant further discussion.
 - Census Tracts 201, 202, 203, 204 and 206.02 indicate higher percentages of minority populations than the United States, Kentucky, Henderson County and nearby areas. Census Tracts 205 and 206.01 indicate a lower percentage of minority population than the United States but higher than Kentucky, Henderson County and

nearby areas. Upon review and discussion with community leaders, the higher concentration occurs in 8 of 10 Block Groups. These Block Groups are located within the older section of the City of Henderson and encompass several subsidized housing areas. Census Tract 204 and Block Groups 1 and 2 contain the highest concentration of minorities with 20.80% black population in Census Tract 204; 18.83% in Block Group 1 and 23.94% in Block Group 2.

- Population 65 and over
 - Henderson County's population 65 and over is higher than the United States and Kentucky. Seven of 8 Census Tracts have higher percentages that warrant further consideration.
 - Census Tracts 201, 202, 204, 205, 206.01 and Block Group 3 of Census Tract 209 indicate higher percentages of persons 65 and over than the United States, Kentucky and Henderson County. Census Tract 203 has a higher percentage than the United States and Kentucky. These areas are located within the older section of the City of Henderson and encompass several subsidized housing developments and areas. The 201 Census Tract and Block Group 1 has a disproportionately high level of population 65 and over at 20.87%. This area is located in the older more historic area of the City of Henderson. A retirement complex and nursing home is located within Census Tract 206.01 Block Group 2.

- Population by Disability
 - Kentucky and Henderson County's population by persons with a disability (5 years and over) are higher than the United States. All 8 Census Tracts within the study area are higher than the United States percentages. Six Census Tracts contain at least 1 Block Group that is higher than the United States, Kentucky, and Henderson County percentages and warrant further consideration.
 - Census Tracts 201, 202, 203, 204, 205 and Block Group 3 of Census Tract 209 indicate higher percentages of persons with disabilities than the United States, Kentucky and Henderson County. Census Tract 204, Block Group 1 has the highest percentage of persons with a disability at 41.62% which is twice the United States average and almost twice the Kentucky and Henderson County percentages.

- **Population by Poverty Level**
 - Henderson County's poverty level is lower than both the United States and Kentucky percentages. However, there are 6 Census Tracts and 7 Block Groups within the study area that have higher percentages that warrant further consideration.
 - Census Tracts 201, 202, 203, 204, 205 and 206.02 indicate higher percentages of persons below poverty level than the United States, Kentucky, Henderson County and nearby areas. Upon review and discussion with community leaders, the higher concentration occurs in 7 of 10 Block Groups. These Block Groups are located within the older section of the City of Henderson and encompass several subsidized housing areas and developments. Census Tract 204 contains the highest concentration of persons below poverty level with 29.45% and 37.85% within Block Group 1. These percentages are more than double the United States, Kentucky and Henderson County percentages.

Locations of specific identified populations:

- Staff completed a study of the project area in order to identify any segment of the population that may be affected by the proposed project.
- Few changes have occurred in the affected area since the last census.
- The study area is located within one historical district and adjacent to the central business district.

Concentrations or communities that share a common religious, cultural, ethnic, or other background:

- A minority concentration of 20.80% was identified within the study area of Census Tract 204. A subsequent review of population data within this affected Census Tract should be undertaken to determine if particular populations exist in the study area; and if so, proactive measures should be undertaken to insure that these groups are not disproportionately affected by any projects.

Communities or neighborhoods that exhibit a high degree of community cohesion:

- Based on the minority population percentages and the high percentages of persons 65 and over a high degree of community cohesion may be present. A subsequent review of data within the affected Census Tracts should be undertaken to determine if particular populations exist in the study area; and if so, proactive measures should be undertaken to insure that these groups are not disproportionately affected by any projects.

Environmental Justice and Community Impact Issues
 US 41A, Six Year Plan Item No. 2-140, Green Street in Henderson

Concentrations of common employment, religious centers, and/or educational institutions:

- There is one elementary school located along US 41A within the study area.
- The project area runs through the central business district of the City of Henderson, a hub of employment.
- A total of 7 religious centers are located along US 41A within the study area.

Potential effects, both positive and negative, of the project on the affected groups:

1. **Access to services, employment, or transportation.**
 - There may be substantial negative impact anticipated regarding access to services, employment, or transportation in this zone during construction of the project.
2. **Displacement of persons, businesses, farms, or non-profit organizations.**
 - Possible displacement of numerous businesses.
 - Possible displacement of numerous homes within the study area. Several apartment complexes are located along US 41A.
 - A total of 4 community service agencies and/or non-profit organizations are also located along US 41A within the study area and could be potentially affected with this project
3. **Disruption of community cohesion or vitality.**
 - The possibility of the project having a negative impact on community cohesion exists.
4. **Effects to human health and/or safety.**
 - Approximately 22 former gasoline service centers and 2 former industries with potential environmental concerns located along US 41A within the study area. The disruption of property near these former sites could possibly have a negative impact on human health and/or safety. Further study may be necessary to avoid potential environmental hazards.
 - The completion of this project will provide for a safer and more efficient driving experience for one the most highly traveled routes through the City of Henderson.

Possible methods to minimize or avoid impacts on the target populations:

- Actively encourage public involvement and participation in the planning and construction phases to residents, businesses, and concerned citizens of the area.

Appendix A

Appendix A

Community Leaders

Henderson County, 20 N. Main Street, Third Floor, Henderson, KY 42420

TITLE	NAME	ADDRESS	PHONE # (270)
County Judge/Executive	Sandy Lee Watkins	20 N. Main St, 3 rd Floor, Henderson 42420	826-3971
County Magistrates	Ray Lacer Carter Wilkerson Charles Alexander Hugh McCormick Bruce Todd	20 N. Main St, 3 rd Floor, Henderson 42420	826-3971
County Attorney	Steven R. Gold	PO Box 1316, Henderson 42419	827-5753
County Clerk	Renny Tapp Matthews	PO Box 374, Henderson 42419	826-3906
Sheriff	Ed Brady	20 N. Main St, 1 st Floor, Henderson 42420	826-2713
Jailer	Ron Herrington	380 Borax Dr, Henderson 42420	827-5560
Coroner	Bruce Farmer	PO Box 1011, Henderson 42419	826-0260
Treasurer	Rebecca Carroll	20 N. Main St, 2 nd Floor, Henderson 42420	826-3233
Finance Officer	Brenda Rider	20 N. Main St, 2 nd Floor, Henderson 42420	826-3233
PVA	Howard Moran	20 N. Main St, Henderson 42420	827-6024
Econ. Dev. Director	Kevin Sheilley	PO Box 674, Henderson 42419	826-7505
Road Eng./Supervisor	Bill Hubiak	5682 Airline Road, Henderson 42420	826-8843
Supt. of Schools	Thomas Richey	1805 2 nd St, Henderson 42420	831-5000
Planning/Zoning Dir.	Peggy Wood	1990 Barrett Ct, Suite C, Henderson 42420	831-1200
Emergency Mgmt.	Larry Koerber	PO Box 983, Henderson 42419	831-1235
Health Dept	Ruth Stocking	PO Box 13, Henderson 42420	826-3951
Housing Inspector	Brian Bishop	5682 Airline Rd, Henderson 42420	826-8843
Public Works Director	N/A		
Solid Waste Director	Pauline Allen	5684 Airline Rd, Henderson 42420	830-7544
Parks Director	N/A		
Circuit Judges	Karen Wilson	20 N. Main St, Henderson 42420	827-1295
Circuit Clerk	Ruth London	20 N. Main St, Henderson 42420	826-2405
Commonwealth Atty.	William Markwell	446 N. Main St, Henderson 42420	826-3936
State Senator	Dorsey Ridley (4 th)	Independence Bank 235 N Elm St, Henderson 42420	830-0122
State Representatives	Dr. David Watkins (11 th) John Arnold, Jr. (7 th)	PO Box 19, Henderson, 42419 PO Box 124, Sturgis, 42459	827-9824 333-4641
Chamber of Commerce	Joan Hoffman (Interim)	201 N. Main St, Henderson 42420	826-9531
Sr. Citizens Center	Steve Rust	1817 N. Elm St, Henderson 42420	827-2948
Newspaper	The Gleaner	PO Box 4, Henderson 42419	827-2000
Radio Station	WSON 860 AM	PO Box 418, Henderson 42420	826-3923
Public Library	Don Wathen	101 S. Main St, Henderson 42420	826-3712

*Appendix A***City of Henderson, PO Box 716, Henderson, KY 42419**












TITLE	NAME	ADDRESS	PHONE #
Mayor	Tom Davis	PO Box 716, Henderson 42419	831-1200
City Council Members	Mike Farmer Robby Mills Jim White Paul Kuerzi	PO Box 716, Henderson 42419	831-1200
City Clerk/Treasurer	Carolyn Williams	PO Box 716, Henderson 42419	831-1200
City Administrator	Russell Sights	PO Box 716, Henderson 42419	831-1200
City Attorney	Joseph E Ternes, Jr.	PO Box 716, Henderson 42419	831-1200
Police Chief	John Reed	PO Box 716, Henderson 42419	831-1200
Fire Chief	Terry Lewis	PO Box 716, Henderson 42419	831-1200
Chamber of Commerce	Joan Hoffman (Interim)	201 N. Main St, Henderson 42420	826-9531
Planning/Zoning Dir.	Peggy Wood	1990 Barrett Ct, Suite C, Henderson 42420	831-1200
Street Dept. Supervisor	X. R. Royster	PO Box 716, Henderson 42419	831-1200
City Engineer	Doug Boom	PO Box 716, Henderson 42419	831-1200
Downtown Henderson Project	Julie Turnipseed	131 N. Main St, Henderson 42420	827-0016
Parks Director	Emily Gilliam	PO Box 716, Henderson 42419	831-1200
Tourism Director	Marcia Eblen	101 N. Water St, Henderson 42420	826-3128
Newspaper	The Gleaner	PO Box 4, Henderson 42419	827-2000
Radio Station	WSO 860 AM	PO Box 418, Henderson 42420	826-3923

Appendix B

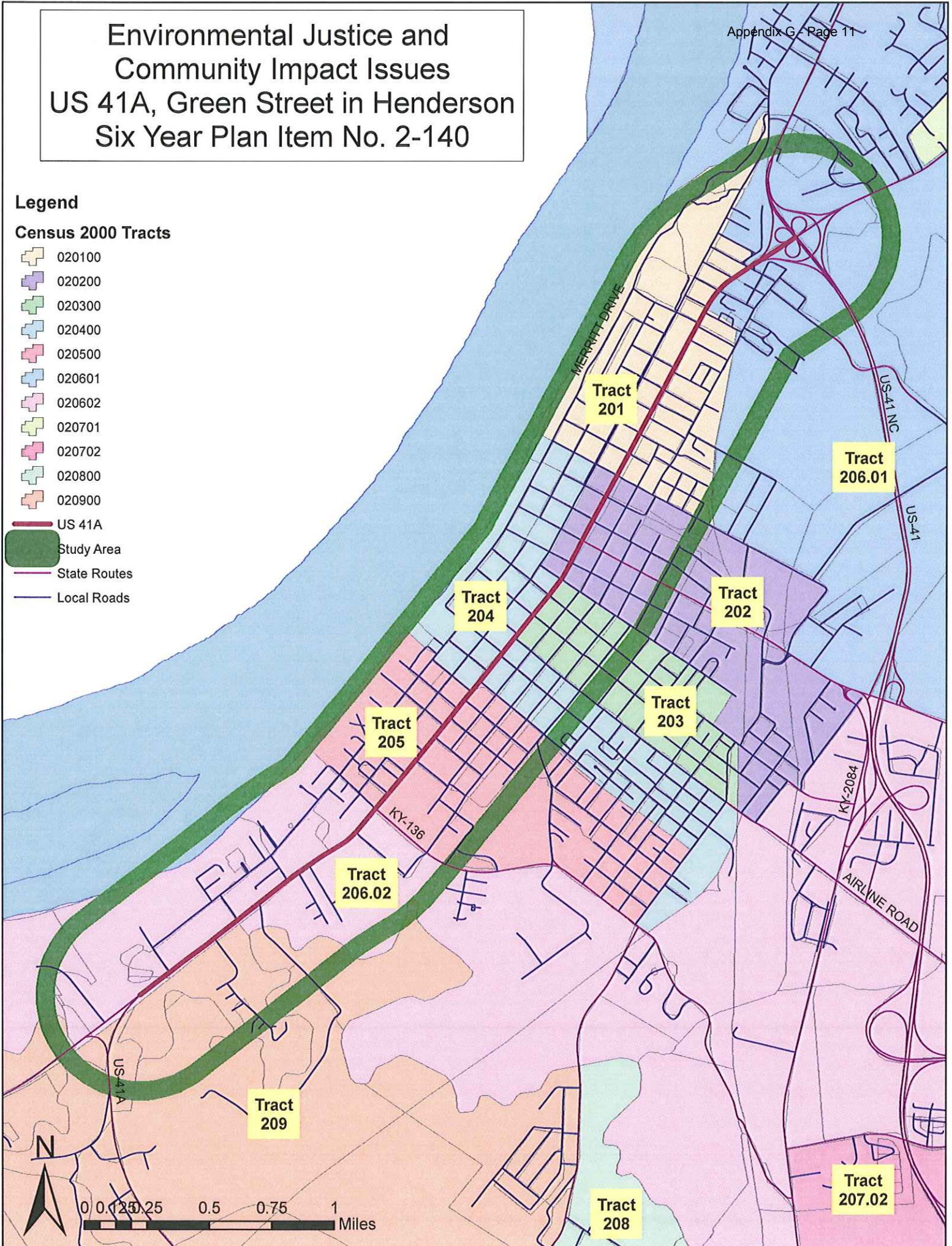
Environmental Justice and Community Impact Issues US 41A, Green Street in Henderson Six Year Plan Item No. 2-140

Legend

Census 2000 Tracts

-  020100
-  020200
-  020300
-  020400
-  020500
-  020601
-  020602
-  020701
-  020702
-  020800
-  020900

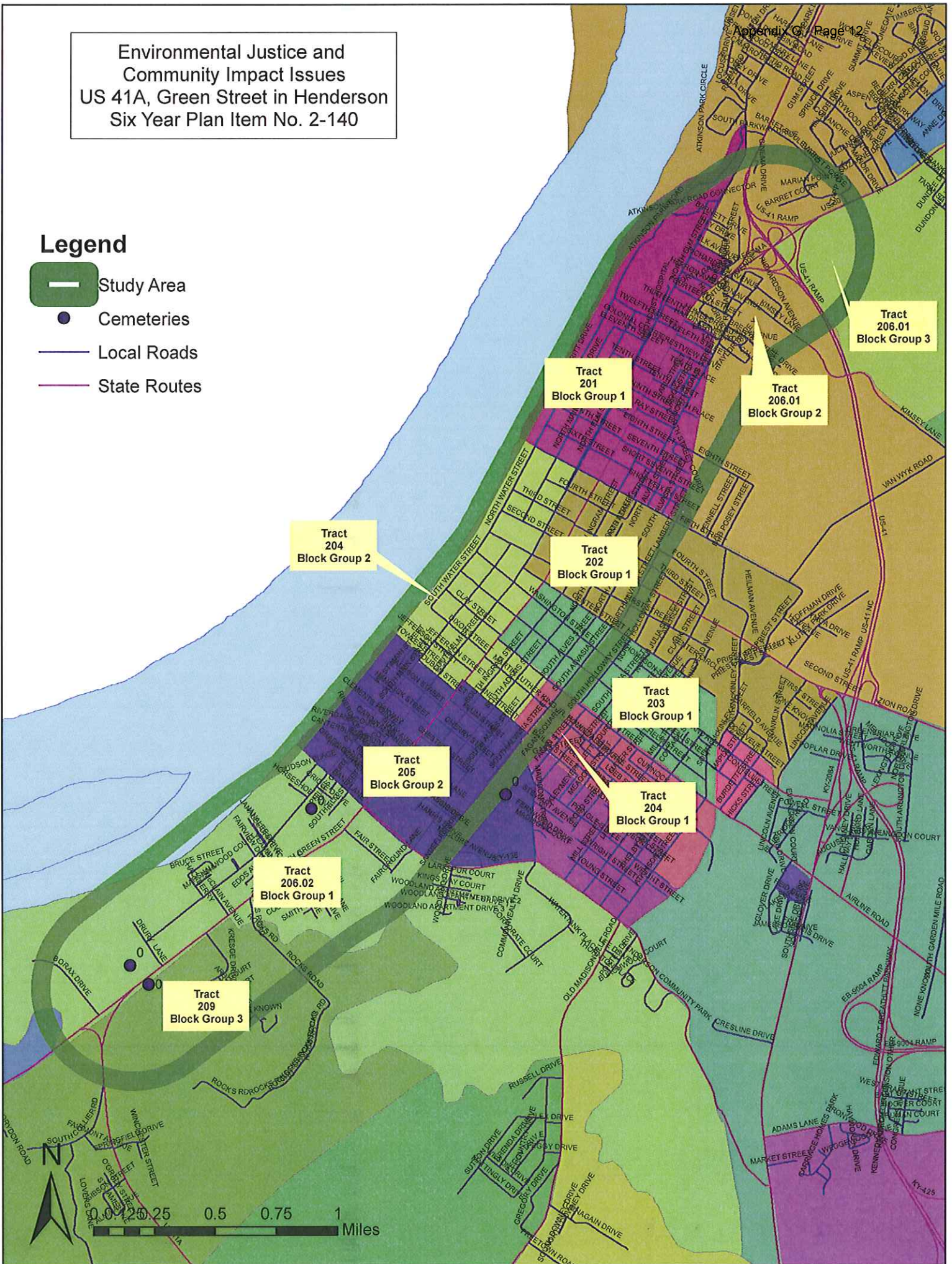
-  US 41A
-  Study Area
-  State Routes
-  Local Roads



Environmental Justice and
Community Impact Issues
US 41A, Green Street in Henderson
Six Year Plan Item No. 2-140

Legend

-  Study Area
-  Cemeteries
-  Local Roads
-  State Routes



U.S. Census Bureau
American FactFinder



TM-P001B. Persons Who are Black or African American Alone: 2000
Universe: **Total population**
Data Set: **Census 2000 Summary File 1 (SF 1) 100-Percent Data**
United States by State

NOTE: For information on confidentiality protection, nonsampling error, definitions, and count corrections see <http://factfinder.census.gov/home/en/datanotes/expsf1u.htm>.

Legend

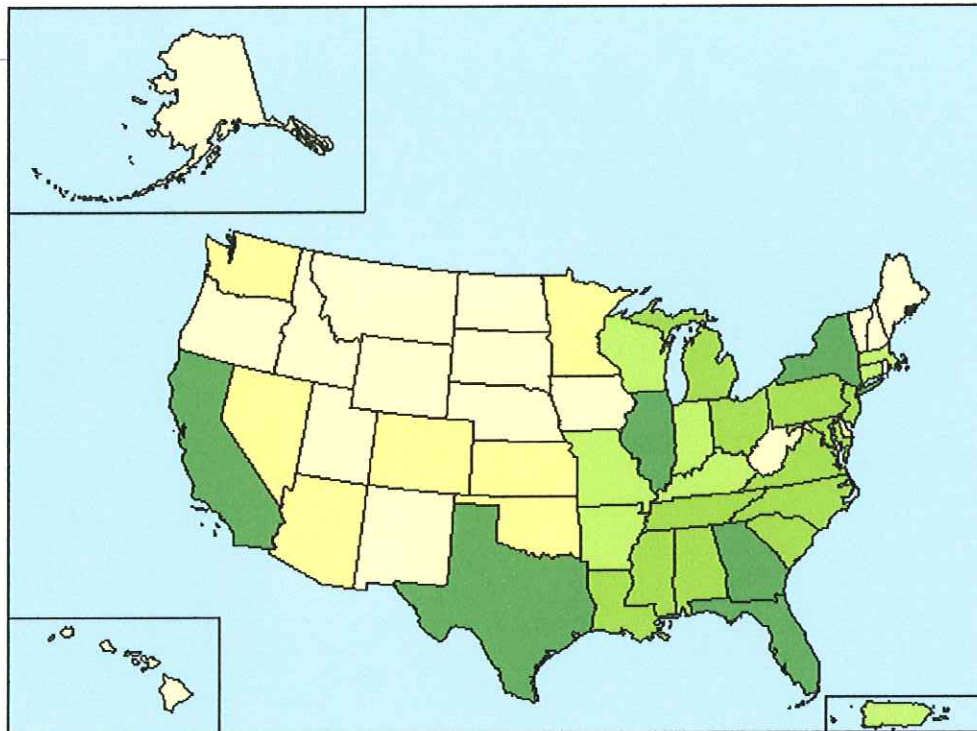
Data Classes

Persons	
2692 - 68541	Lightest Yellow
135477 - 260968	Yellow
295994 - 629391	Light Green
932809 - 1737545	Medium Green
1876875 - 3014385	Darkest Green

Features

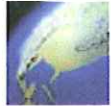
- Major Road
- Street
- Stream/Waterbody

Items in graytext
are not visible
at this zoom level



Source: U.S. Census Bureau, Census 2000 Summary File 1, Matrix P7.

U.S. Census Bureau
American FactFinder



TM-P001B. Persons Who are Black or African American Alone: 2000
Universe: Total population
Data Set: Census 2000 Summary File 1 (SF 1) 100-Percent Data
Kentucky by County

NOTE: For information on confidentiality protection, nonsampling error, definitions, and count corrections see <http://factfinder.census.gov/home/en/datanotes/expsf1u.htm>

Legend

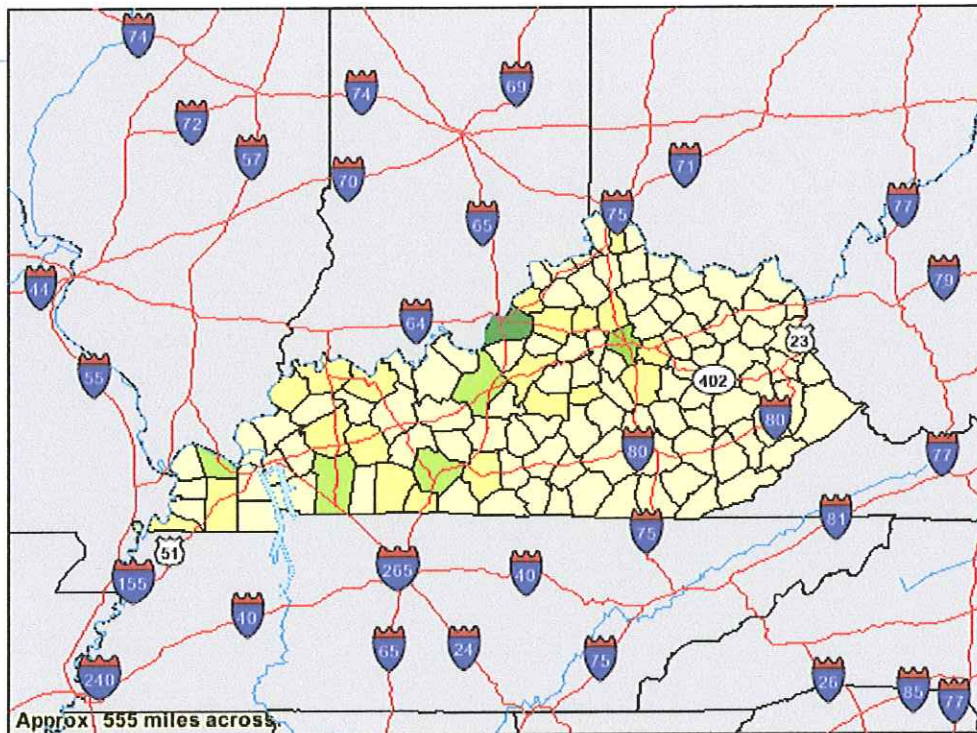
Data Classes

- Persons
- 1 - 1394
- 1480 - 5810
- 7128 - 17148
- 35116 - 35116
- 130928 - 130928

Features

- Major Road
- Street
- Stream/Waterbody
- Stream/Waterbody

Items in gray text are not visible at this zoom level



Source: U.S. Census Bureau, Census 2000 Summary File 1, Matrix P7.

U.S. Census Bureau
American FactFinder



TM-P001B. Persons Who are Black or African American Alone: 2000
 Universe: **Total population**
 Data Set: **Census 2000 Summary File 1 (SF 1) 100-Percent Data**
Henderson County, Kentucky by County Subdivision

NOTE: For information on confidentiality protection, nonsampling error, definitions, and count corrections see <http://factfinder.census.gov/home/en/datanotes/expsf1u.htm>.

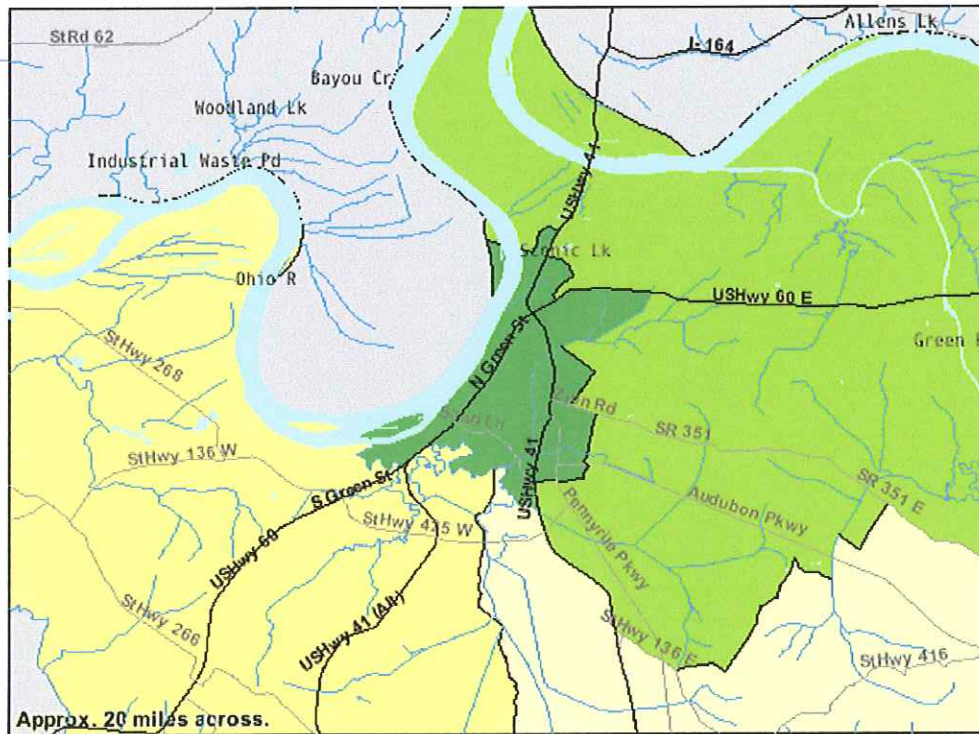
Legend

Data Classes

- Persons
- 28 - 28
- 268 - 268
- 304 - 304
- 2581 - 2581

Features

- Major Road
- Street
- Stream/Waterbody
- Stream/Waterbody



Source: U.S. Census Bureau, Census 2000 Summary File 1, Matrix P7.

U.S. Census Bureau
American FactFinder



TM-P001B. Persons Who are Black or African American Alone: 2000
 Universe: Total population
 Data Set: Census 2000 Summary File 1 (SF 1) 100-Percent Data
Henderson County, Kentucky by Census Tract

NOTE: For information on confidentiality protection, nonsampling error, definitions, and count corrections see <http://factfinder.census.gov/home/en/datanotes/expsf1u.htm>.

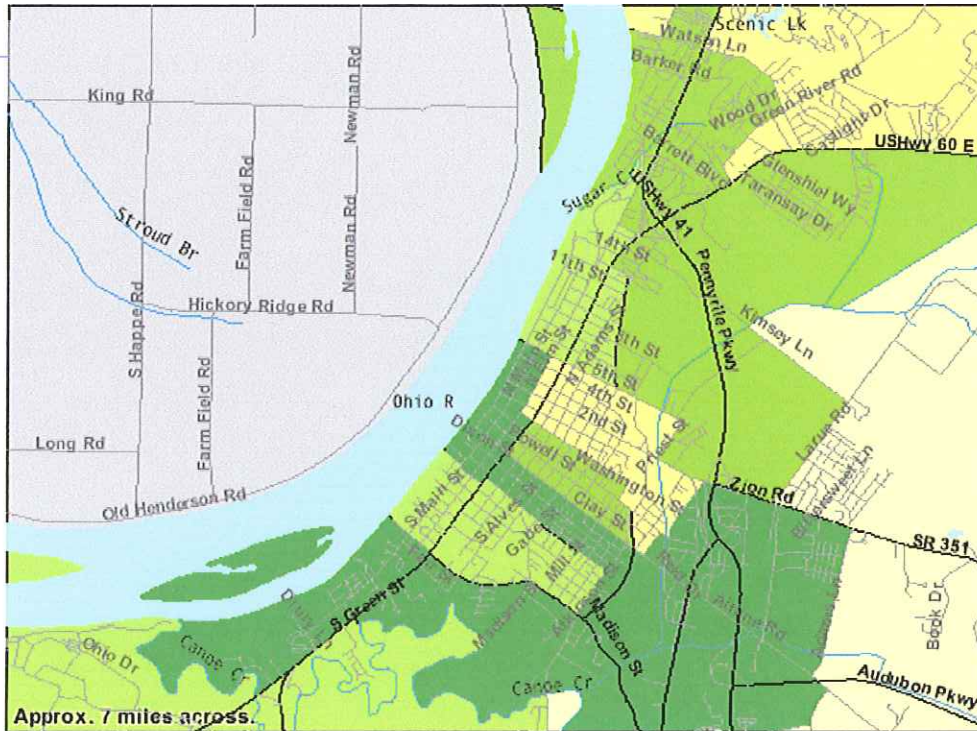
Legend

Data Classes

- Persons
- 28 - 99
 - 186 - 205
 - 268 - 308
 - 345 - 405
 - 520 - 531

Features

- Major Road
- Street
- Stream/Waterbody
- Stream/Waterbody



Source: U.S. Census Bureau, Census 2000 Summary File 1, Matrix P7.

U.S. Census Bureau
American FactFinder



TM-P001H. Persons Who are Hispanic or Latino (of any race): 2000
Universe: Total population
Data Set: Census 2000 Summary File 1 (SF 1) 100-Percent Data
United States by State

NOTE: For information on confidentiality protection, nonsampling error, definitions, and count corrections see <http://factfinder.census.gov/home/en/datanotes/expsf1u.htm>.

Legend

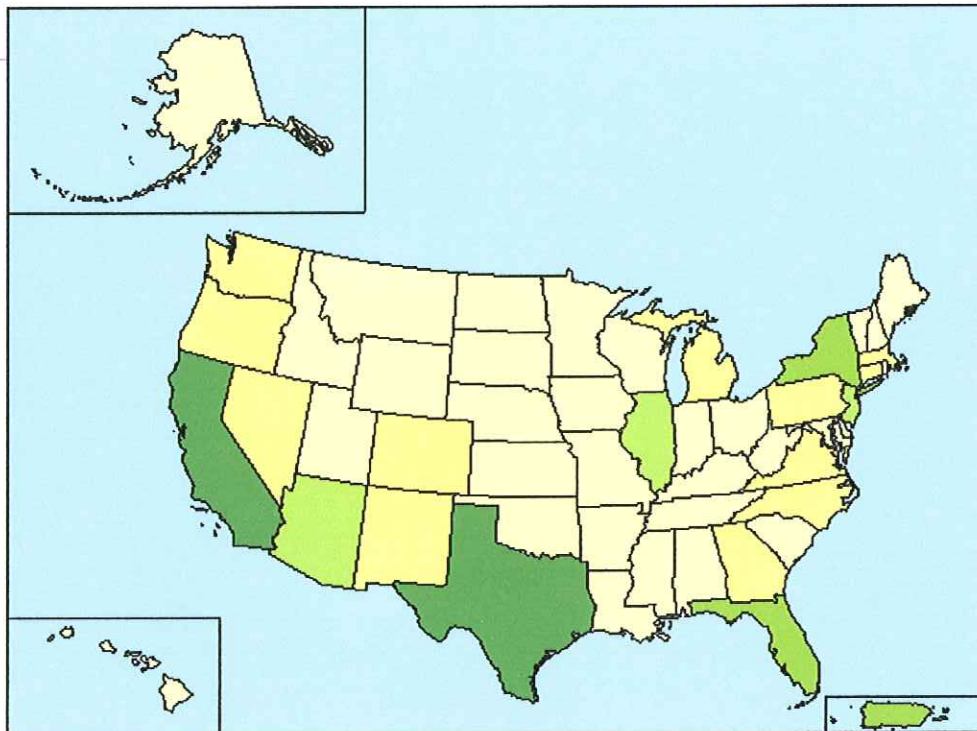
Data Classes

Persons	
5504 - 227916	Lightest Yellow
275314 - 765386	Yellow
1117191 - 1530262	Light Green
2682715 - 3762746	Medium Green
6669666 - 10966556	Darkest Green

Features

- Major Road
- Street
- Stream/Waterbody

Items in graytext
are not visible
at this zoom level



Source: U.S. Census Bureau, Census 2000 Summary File 1, Matrix P8.

U.S. Census Bureau
American FactFinder



TM-P001H. Persons Who are Hispanic or Latino (of any race): 2000
Universe: Total population
Data Set: Census 2000 Summary File 1 (SF 1) 100-Percent Data
Kentucky by County

NOTE: For information on confidentiality protection, nonsampling error, definitions, and count corrections see <http://factfinder.census.gov/home/en/datanotes/expsf1u.htm>

Legend

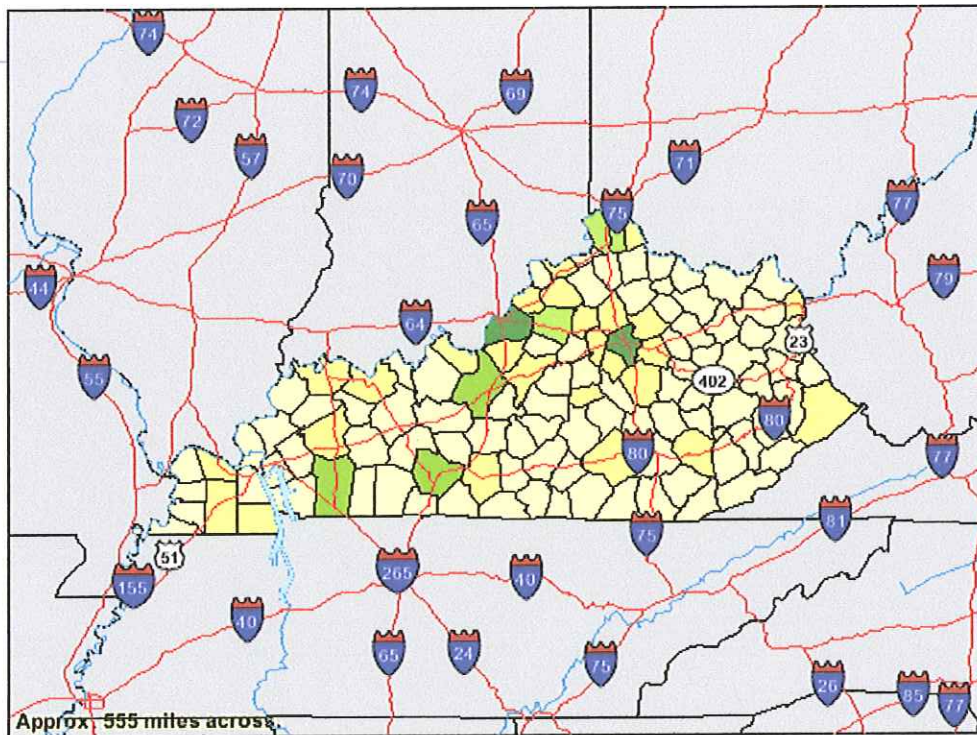
Data Classes

- Persons
- 21 - 291
- 330 - 888
- 1505 - 1702
- 2466 - 3494
- 8561 - 12370

Features

- Major Road
- Street
- Stream/Waterbody
- Stream/Waterbody

Items in gray text are not visible at this zoom level



Source: U.S. Census Bureau, Census 2000 Summary File 1, Matrix P8.



TM-P001H. Persons Who are Hispanic or Latino (of any race): 2000
 Universe: Total population
 Data Set: Census 2000 Summary File 1 (SF 1) 100-Percent Data
Henderson County, Kentucky by County Subdivision

NOTE: For information on confidentiality protection, nonsampling error, definitions, and count corrections see <http://factfinder.census.gov/home/en/datanotes/expsf1u.htm>.

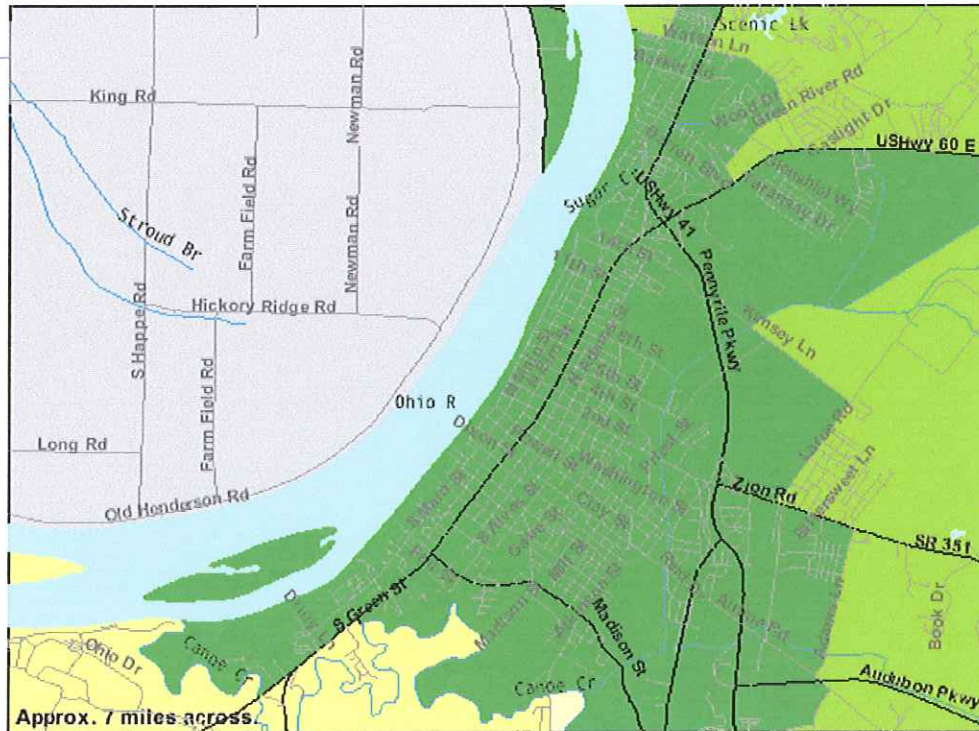
Legend

Data Classes

Persons	
15 - 15	(Lightest yellow)
46 - 46	(Yellow)
109 - 109	(Light green)
263 - 263	(Dark green)

Features

- Major Road
- Street
- Stream/Waterbody
- Stream/Waterbody



Source: U.S. Census Bureau, Census 2000 Summary File 1, Matrix P8.

U.S. Census Bureau
American FactFinder



TM-P001H. Persons Who are Hispanic or Latino (of any race): 2000
 Universe: **Total population**
 Data Set: **Census 2000 Summary File 1 (SF 1) 100-Percent Data**
Henderson County, Kentucky by Census Tract

NOTE: For information on confidentiality protection, nonsampling error, definitions, and count corrections see <http://factfinder.census.gov/home/en/datanotes/expsf1u.htm>

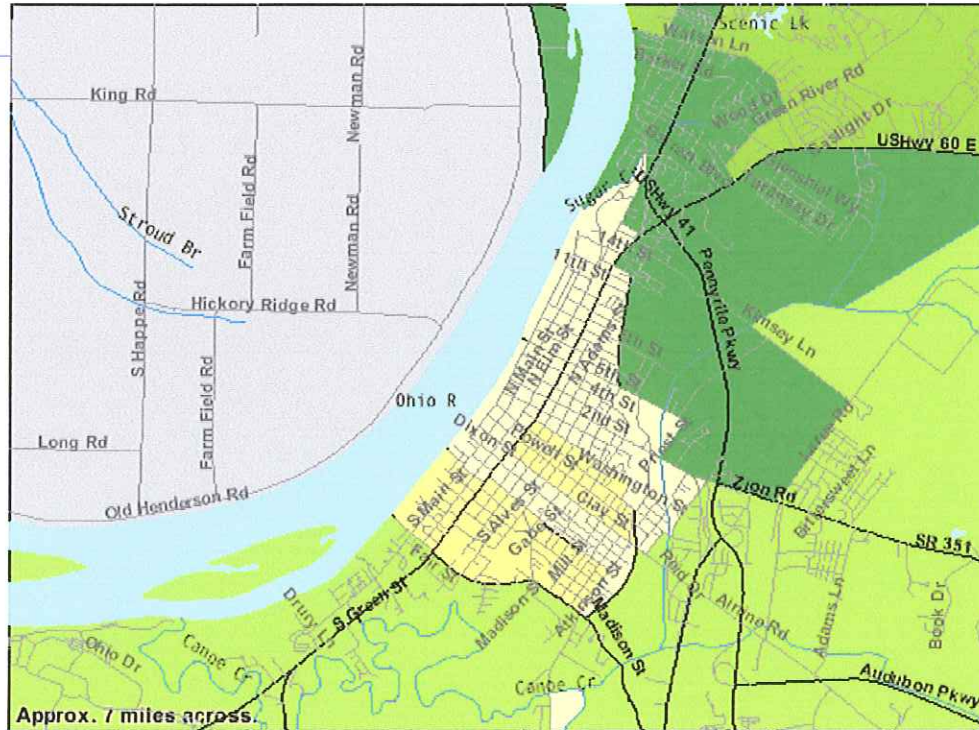
Legend

Data Classes

- Persons
- 15 - 19
 - 26 - 29
 - 40 - 51
 - 69 - 69
 - 102 - 102

Features

- Major Road
- Street
- Stream/Waterbody
- Stream/Waterbody



Source: U.S. Census Bureau, Census 2000 Summary File 1, Matrix P8.

U.S. Census Bureau
American FactFinder



TM-P020. Percent of Persons 65 Years and Over: 2000
Universe: **Total population**
Data Set: **Census 2000 Summary File 1 (SF 1) 100-Percent Data**
United States by State

NOTE: For information on confidentiality protection, nonsampling error, definitions, and count corrections see <http://factfinder.census.gov/home/en/datanotes/expsf1u.htm>

Legend

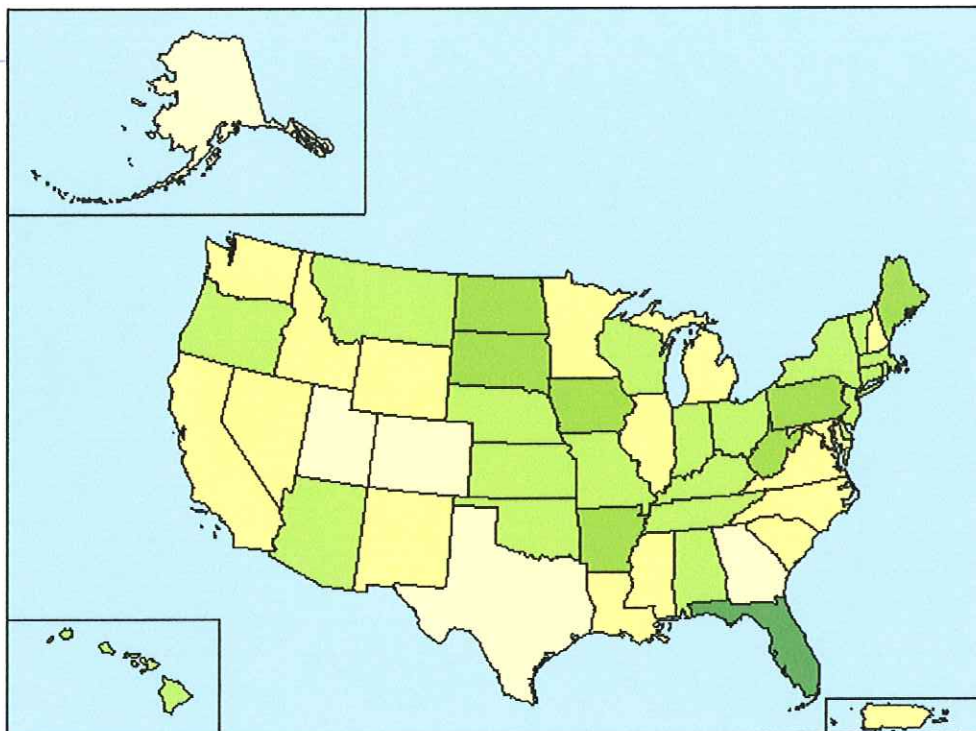
Data Classes

Percent
5.7 - 9.9
10.6 - 12.3
12.4 - 13.8
14.0 - 15.6
17.6 - 17.6

Features

- Major Road
- Street
- Stream/Waterbody

Items in graytext
are not visible
at this zoom level



Source: U.S. Census Bureau, Census 2000 Summary File 1, Matrices P1, and P30.

U.S. Census Bureau
American FactFinder



TM-P020. Percent of Persons 65 Years and Over: 2000
Universe: Total population
Data Set: Census 2000 Summary File 1 (SF 1) 100-Percent Data
Kentucky by County

NOTE: For information on confidentiality protection, nonsampling error, definitions, and count corrections see <http://factfinder.census.gov/home/en/datanotes/expsf1u.htm>.

Legend

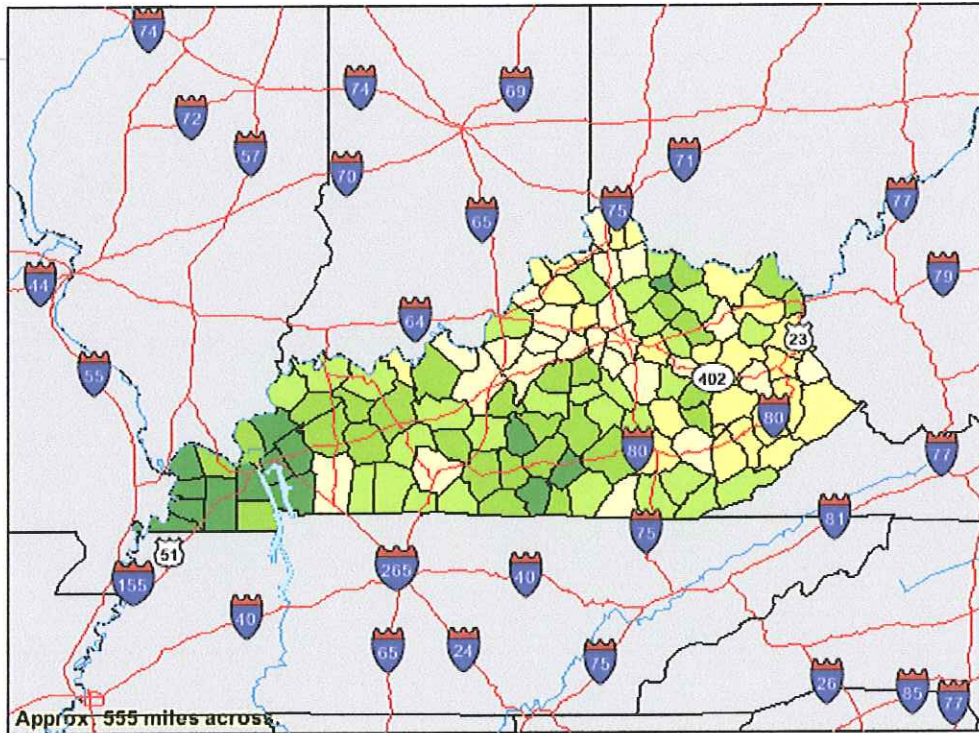
Data Classes

- Percent
- 7.0 - 10.8
- 11.0 - 12.6
- 12.7 - 14.1
- 14.2 - 15.9
- 16.1 - 18.5

Features

- Major Road
- Street
- Stream/Waterbody
- Stream/Waterbody

Items in graytext are not visible at this zoom level



Source: U.S. Census Bureau, Census 2000 Summary File 1, Matrices P1, and P30.

U.S. Census Bureau
American FactFinder



TM-P020. Percent of Persons 65 Years and Over: 2000
 Universe: **Total population**
 Data Set: **Census 2000 Summary File 1 (SF 1) 100-Percent Data**
Henderson County, Kentucky by County Subdivision

NOTE: For information on confidentiality protection, nonsampling error, definitions, and count corrections see <http://factfinder.census.gov/home/en/datanotes/expsf1u.htm>.

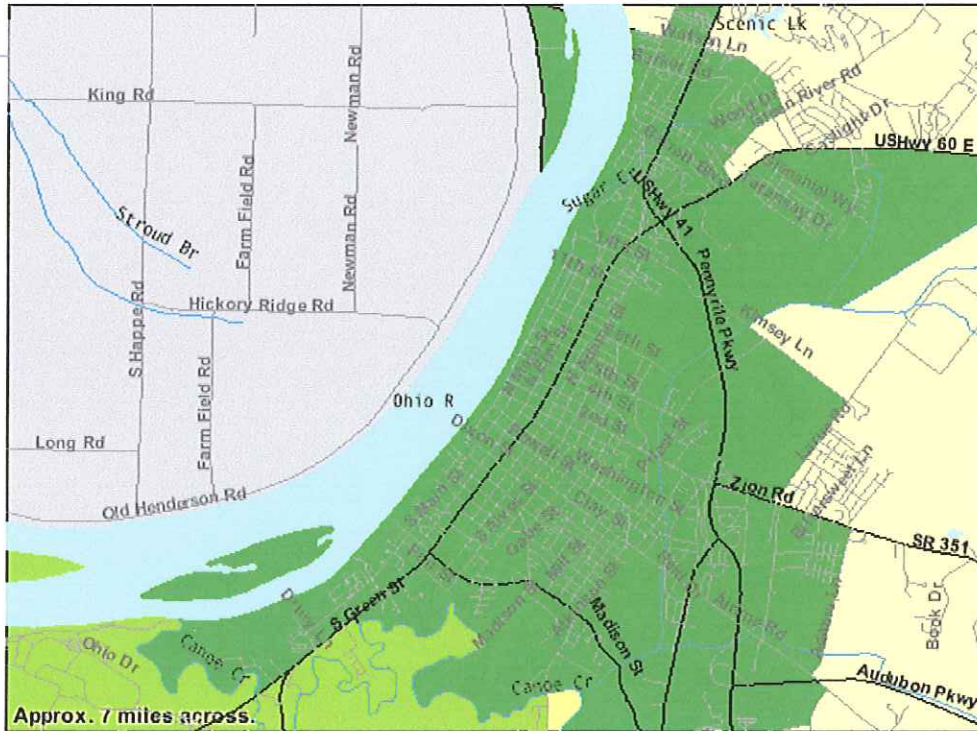
Legend

Data Classes

Percent	
	9.2 - 9.2
	10.2 - 10.2
	11.1 - 11.1
	16.6 - 16.6

Features

- Major Road
- Street
- Stream/Waterbody
- Stream/Waterbody



Source: U.S. Census Bureau, Census 2000 Summary File 1, Matrices P1, and P30.

U.S. Census Bureau
American FactFinder



TM-P020. Percent of Persons 65 Years and Over: 2000
 Universe: **Total population**
 Data Set: **Census 2000 Summary File 1 (SF 1) 100-Percent Data**
Henderson County, Kentucky by Census Tract

NOTE: For information on confidentiality protection, nonsampling error, definitions, and count corrections see <http://factfinder.census.gov/home/en/datanotes/expsf1u.htm>.

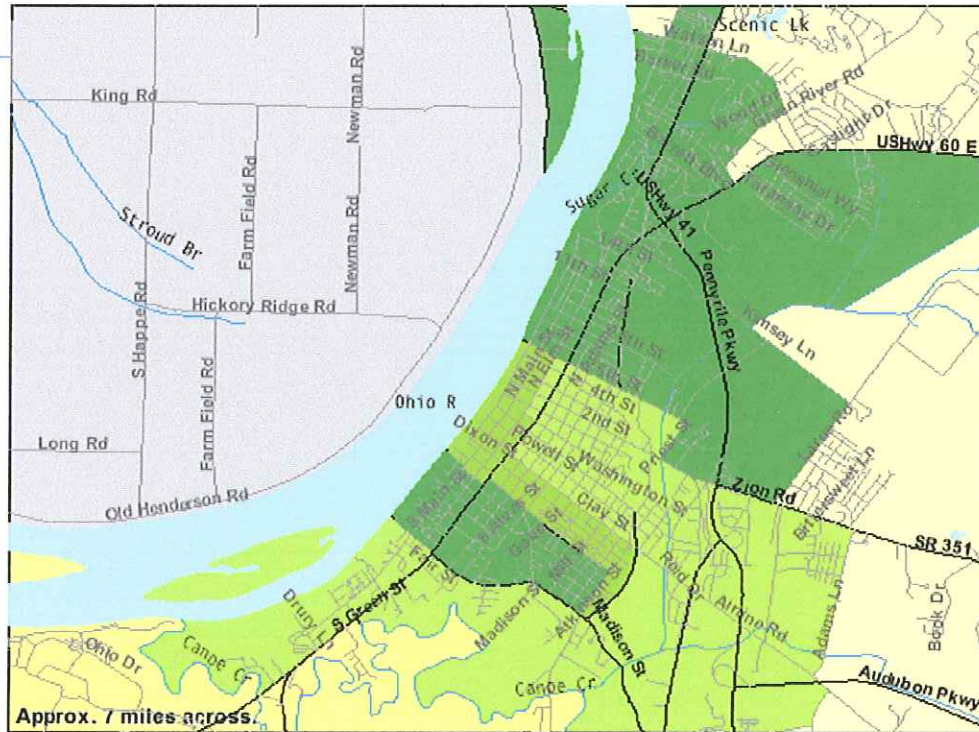
Legend

Data Classes

Percent
9.0 - 9.5
10.2 - 11.1
12.2 - 12.6
14.7 - 14.7
19.2 - 20.9

Features

- Major Road
- Street
- Stream/Waterbody
- Stream/Waterbody



Source: U.S. Census Bureau, Census 2000 Summary File 1, Matrices P1, and P30.

U.S. Census Bureau
American FactFinder



TM-P045. Percent of Persons 5 to 20 Years With a Disability: 2000
 Universe: **Civilian noninstitutionalized population 5 to 20 years**
 Data Set: **Census 2000 Summary File 3 (SF 3) - Sample Data**
United States by State

NOTE: Data based on a sample except in P3, P4, H3, and H4. For information on confidentiality protection, sampling error, nonsampling error, definitions, and count corrections see <http://factfinder.census.gov/home/en/datanotes/expsf3.htm>.

Legend

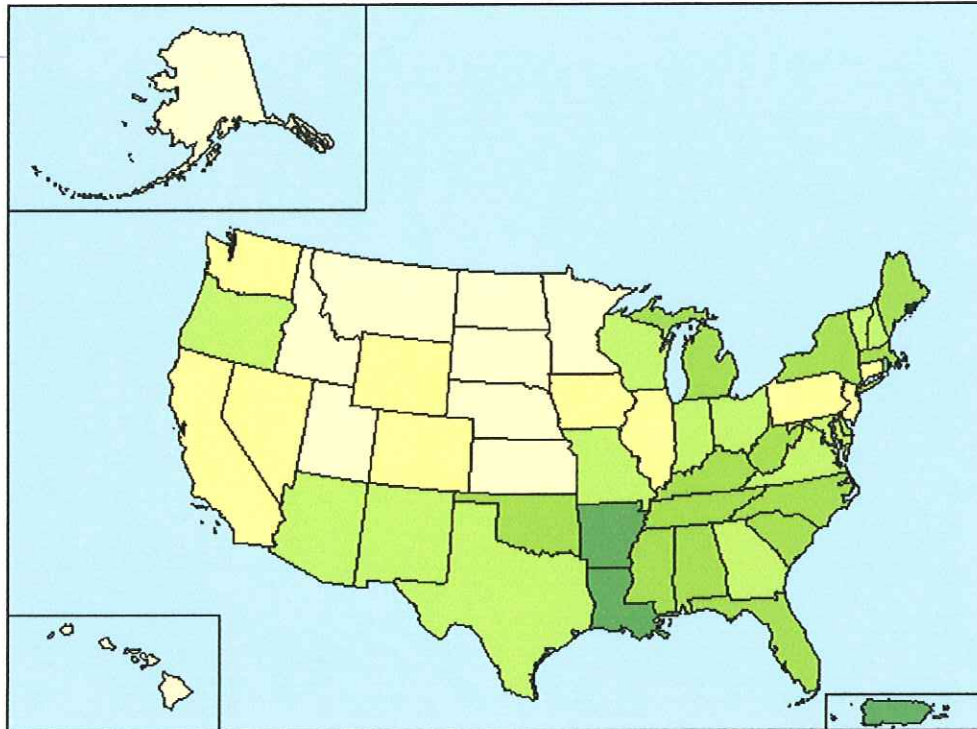
Data Classes

- Percent
- 6.6 - 7.2
- 7.3 - 7.7
- 7.9 - 8.4
- 8.5 - 9.1
- 9.3 - 10.2

Features

- Major Road
- Street
- Stream/Waterbody

Items in graytext are not visible at this zoom level



Source: U.S. Census Bureau, Census 2000 Summary File 3, Matrix P42.

U.S. Census Bureau
American FactFinder



TM-P045. Percent of Persons 5 to 20 Years With a Disability: 2000
Universe: **Civilian noninstitutionalized population 5 to 20 years**
Data Set: **Census 2000 Summary File 3 (SF 3) - Sample Data**
Kentucky by County

NOTE: Data based on a sample except in P3, P4, H3, and H4. For information on confidentiality protection, sampling error, nonsampling error, definitions, and count corrections see <http://factfinder.census.gov/home/en/datanotes/expsf3.htm>

Legend

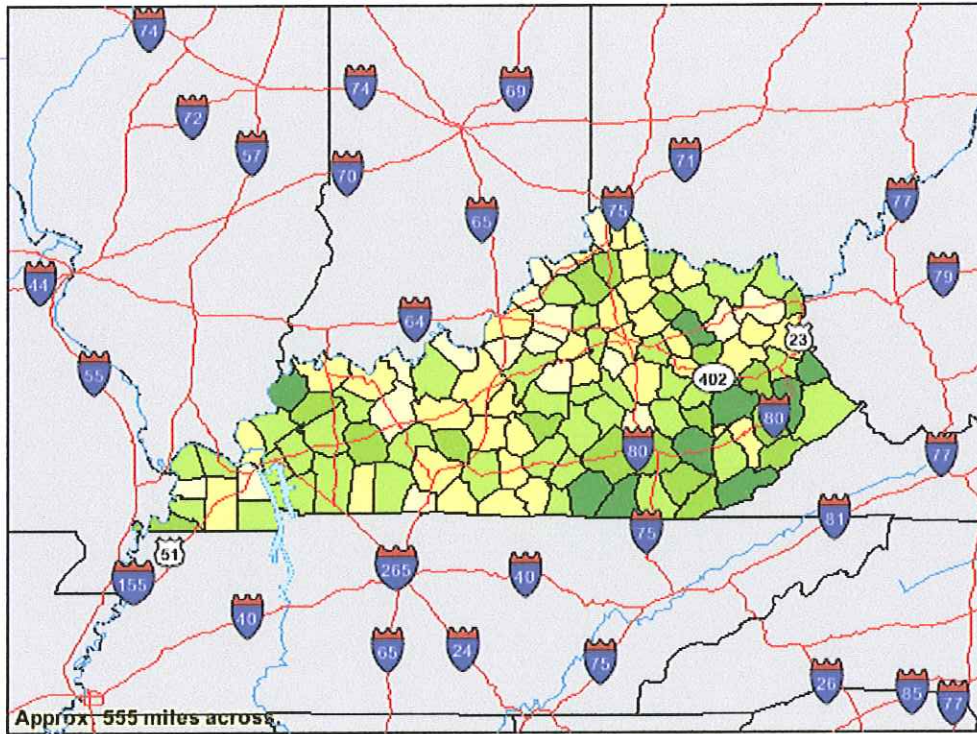
Data Classes

- Percent
- 4.0 - 7.3
 - 7.5 - 8.8
 - 8.9 - 10.3
 - 10.5 - 12.4
 - 12.7 - 15.2

Features

- Major Road
- Street
- Stream/Waterbody
- Stream/Waterbody

Items in gray text are not visible at this zoom level



Source: U.S. Census Bureau, Census 2000 Summary File 3, Matrix P42.

U.S. Census Bureau
American FactFinder



TM-P045. Percent of Persons 5 to 20 Years With a Disability: 2000
Universe: Civillian noninstitutionalized population 5 to 20 years
Data Set: Census 2000 Summary File 3 (SF 3) - Sample Data
Henderson County, Kentucky by County Subdivision

NOTE: Data based on a sample except in P3, P4, H3, and H4. For information on confidentiality protection, sampling error, nonsampling error, definitions, and count corrections see <http://factfinder.census.gov/home/en/datanotes/expsf3.htm>.

Legend

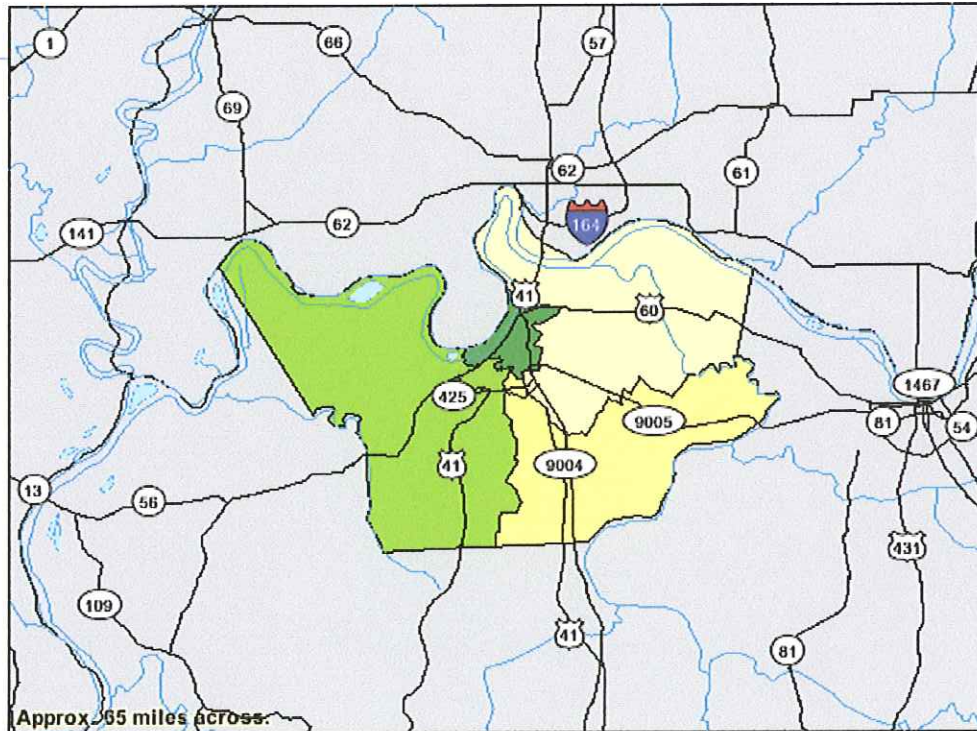
Data Classes

Percent	
5.8 - 5.8	Lightest yellow
6.1 - 6.1	Yellow
6.8 - 6.8	Light green
10.8 - 10.8	Dark green

Features

- Major Road
- Street
- Stream/Waterbody
- Stream/Waterbody

Items in gray text are not visible at this zoom level



Source: U.S. Census Bureau, Census 2000 Summary File 3, Matrix P42.

U.S. Census Bureau
American FactFinder

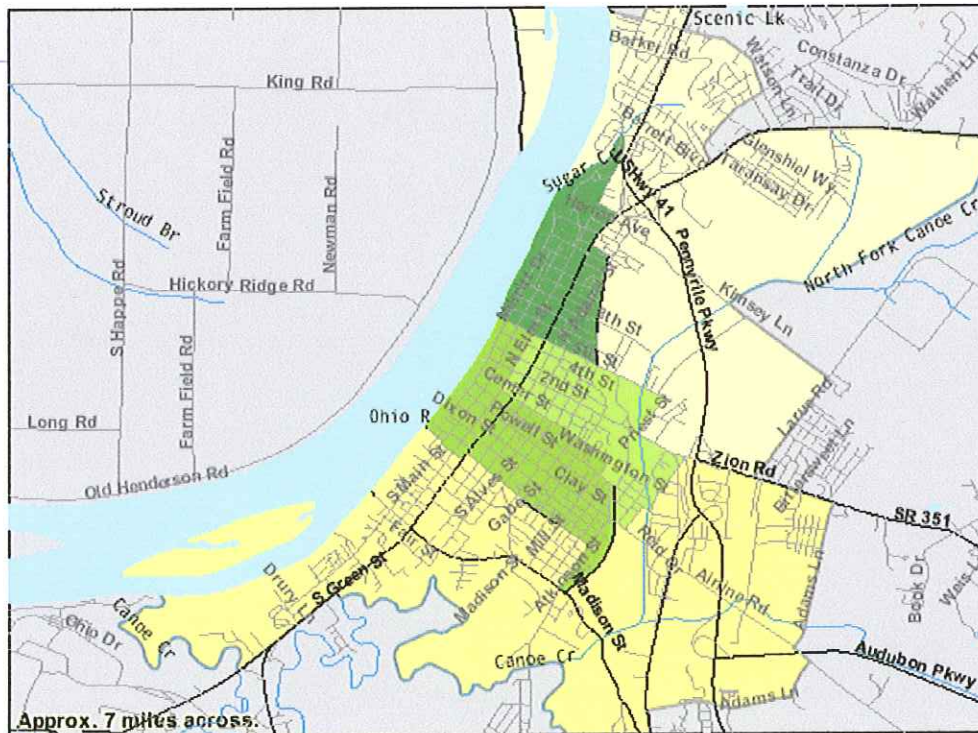


TM-P045. Percent of Persons 5 to 20 Years With a Disability: 2000
 Universe: Civilian noninstitutionalized population 5 to 20 years
 Data Set: Census 2000 Summary File 3 (SF 3) - Sample Data
Henderson CCD, Henderson County, Kentucky by Census Tract

NOTE: Data based on a sample except in P3, P4, H3, and H4. For information on confidentiality protection, sampling error, nonsampling error, definitions, and count corrections see <http://factfinder.census.gov/home/en/datanotes/expsf3.htm>.

Legend

- Data Classes**
- Percent
- 2.8 - 2.8
 - 7.0 - 8.6
 - 12.7 - 12.7
 - 19.4 - 20.1
 - 21.4 - 21.4
- Features**
- Major Road
 - Street
 - Stream/Waterbody
 - Stream/Waterbody



Source: U.S. Census Bureau, Census 2000 Summary File 3, Matrix P42.

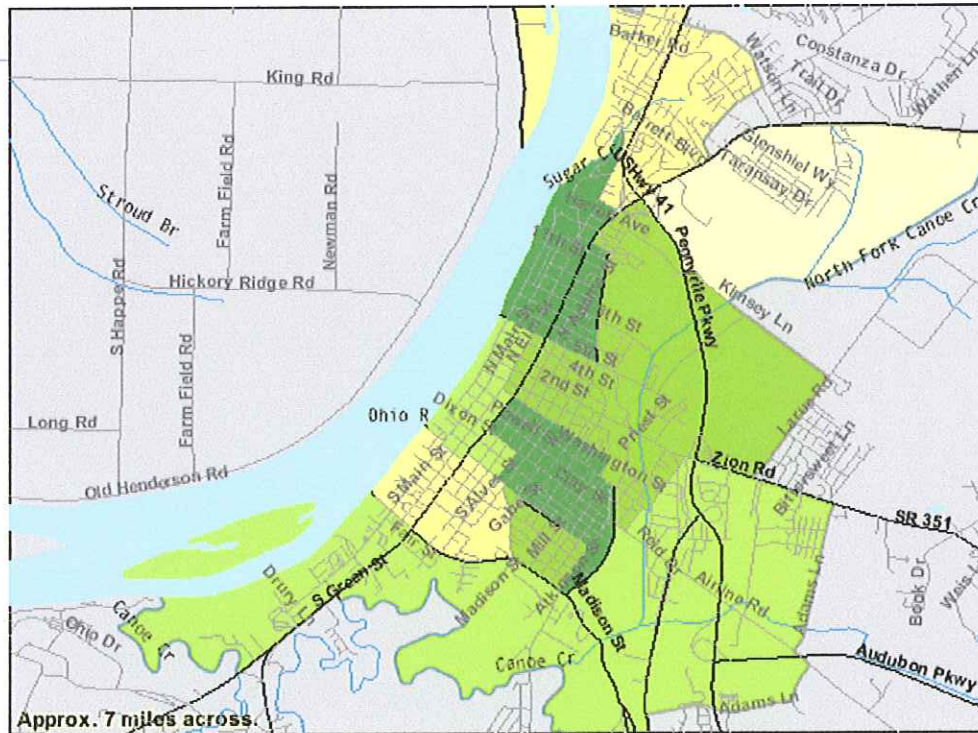


TM-P045. Percent of Persons 5 to 20 Years With a Disability: 2000
 Universe: Civilian noninstitutionalized population 5 to 20 years
 Data Set: Census 2000 Summary File 3 (SF 3) - Sample Data
Henderson CCD, Henderson County, Kentucky by Block Group

NOTE: Data based on a sample except in P3, P4, H3, and H4. For information on confidentiality protection, sampling error, nonsampling error, definitions, and count corrections see <http://factfinder.census.gov/home/en/datanotes/expfs3.htm>

Legend

- Data Classes**
- Percent
- 0.0 - 0.0
 - 2.4 - 3.6
 - 6.9 - 9.5
 - 11.3 - 12.9
 - 20.1 - 24.6
- Features**
- Major Road
 - Street
 - Stream/Waterbody
 - Stream/Waterbody



Source: U.S. Census Bureau, Census 2000 Summary File 3, Matrix P42.

U.S. Census Bureau
American FactFinder



TM-P046. Percent of Persons 21 to 64 Years With a Disability: 2000
Universe: **Civilian noninstitutionalized population 21 to 64 years**
Data Set: **Census 2000 Summary File 3 (SF 3) - Sample Data**
United States by State

NOTE: Data based on a sample except in P3, P4, H3, and H4. For information on confidentiality protection, sampling error, nonsampling error, definitions, and count corrections see <http://factfinder.census.gov/home/en/datanotes/expfs3.htm>.

Legend

Data Classes

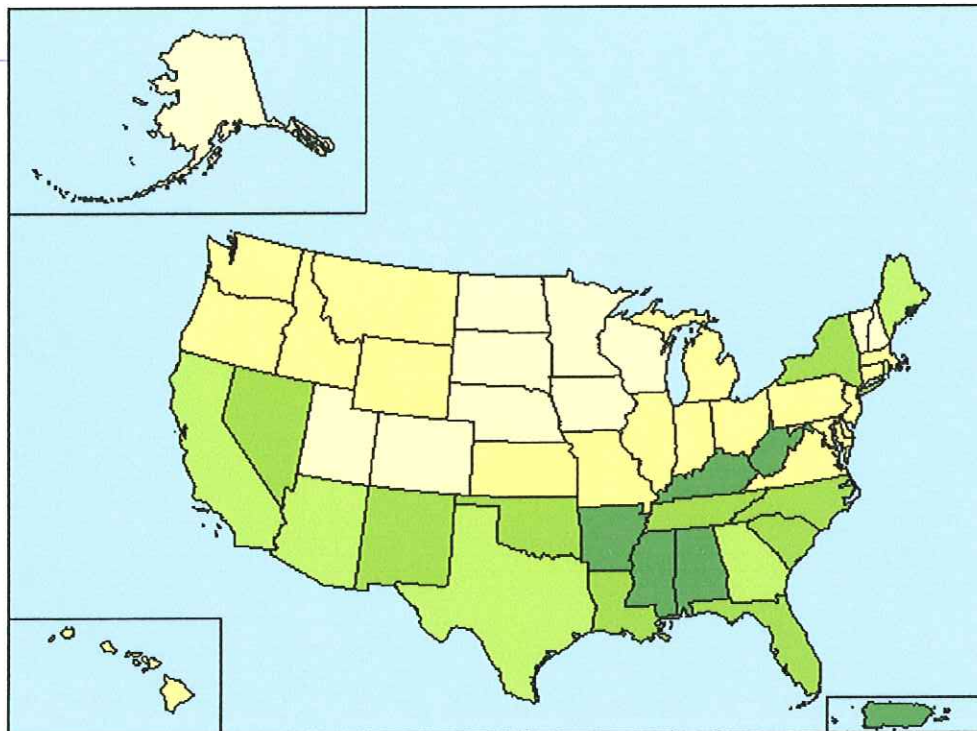
Percent

14.0 - 16.2
16.7 - 18.5
19.2 - 20.0
20.9 - 22.7
23.2 - 28.2

Features

- Major Road
- Street
- Stream/Waterbody

Items in graytext
are not visible
at this zoom level



Source: U.S. Census Bureau, Census 2000 Summary File 3, Matrix P42.

U.S. Census Bureau
American FactFinder



TM-P046. Percent of Persons 21 to 64 Years With a Disability: 2000
Universe: Civilian noninstitutionalized population 21 to 64 years
Data Set: Census 2000 Summary File 3 (SF 3) - Sample Data
Kentucky by County

NOTE: Data based on a sample except in P3, P4, H3, and H4. For information on confidentiality protection, sampling error, nonsampling error, definitions, and count corrections see <http://factfinder.census.gov/home/en/datanotes/expsf3.htm>.

Legend

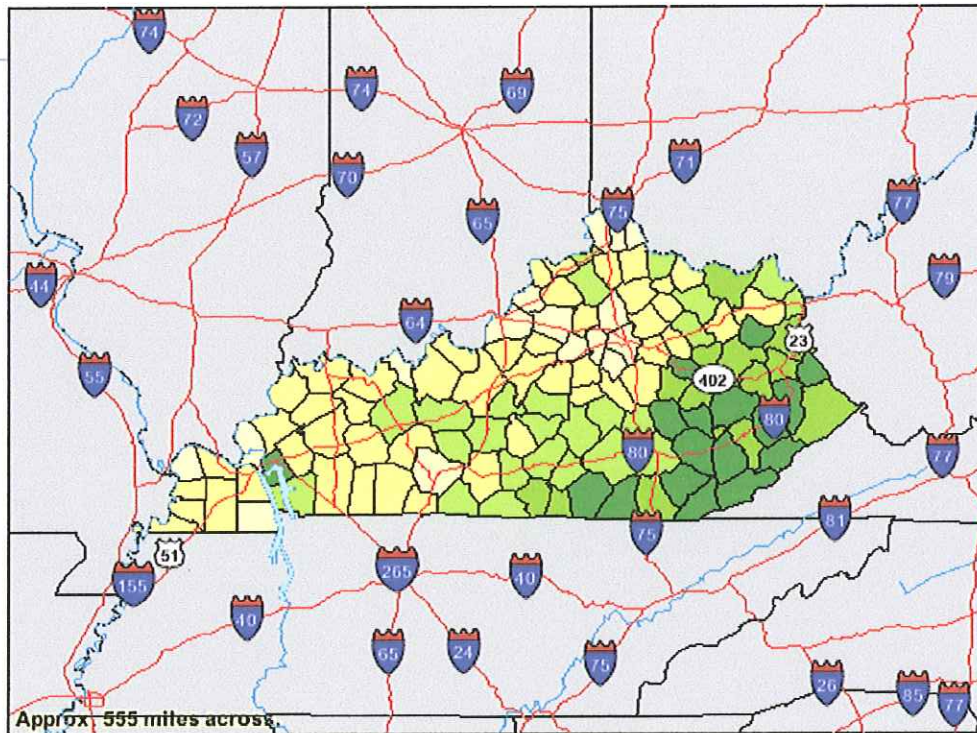
Data Classes

Percent	
13.1 - 20.5	Lightest yellow
21.3 - 26.0	Yellow
26.3 - 31.1	Light green
32.2 - 36.1	Medium green
36.9 - 42.8	Dark green

Features

- Major Road
- Street
- Stream/Waterbody
- Stream/Waterbody

Items in gray text are not visible at this zoom level



Source: U.S. Census Bureau, Census 2000 Summary File 3, Matrix P42.

U.S. Census Bureau
American FactFinder



TM-P046. Percent of Persons 21 to 64 Years With a Disability: 2000
Universe: **Civilian noninstitutionalized population 21 to 64 years**
Data Set: **Census 2000 Summary File 3 (SF 3) - Sample Data**
Henderson County, Kentucky by County Subdivision

NOTE: Data based on a sample except in P3, P4, H3, and H4. For information on confidentiality protection, sampling error, nonsampling error, definitions, and count corrections see <http://factfinder.census.gov/home/en/datanotes/expsf3.htm>.

Legend

Data Classes

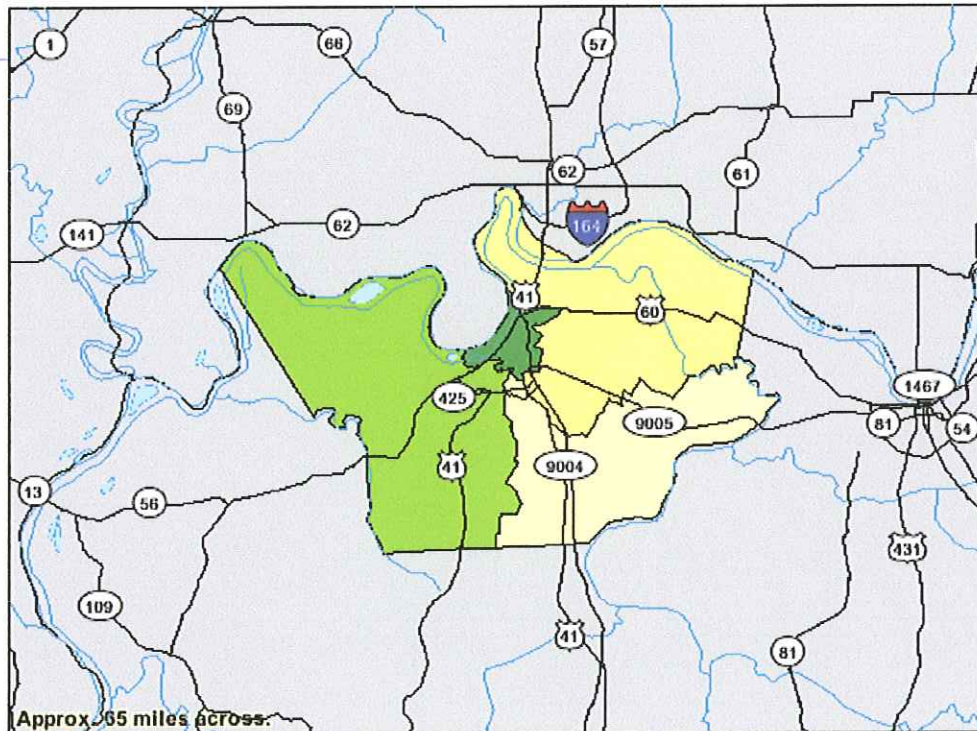
Percent

12.6 - 12.6
16.8 - 16.8
26.0 - 26.0
26.7 - 26.7

Features

- Major Road
- Street
- Stream/Waterbody
- Stream/Waterbody

Items in gray text are not visible at this zoom level



Source: U.S. Census Bureau, Census 2000 Summary File 3, Matrix P42.

U.S. Census Bureau
American FactFinder



TM-P046. Percent of Persons 21 to 64 Years With a Disability: 2000
 Universe: Civilian noninstitutionalized population 21 to 64 years
 Data Set: Census 2000 Summary File 3 (SF 3) - Sample Data
Henderson CCD, Henderson County, Kentucky by Census Tract

NOTE: Data based on a sample except in P3, P4, H3, and H4. For information on confidentiality protection, sampling error, nonsampling error, definitions, and count corrections see <http://factfinder.census.gov/home/en/datanotes/expfs3.htm>

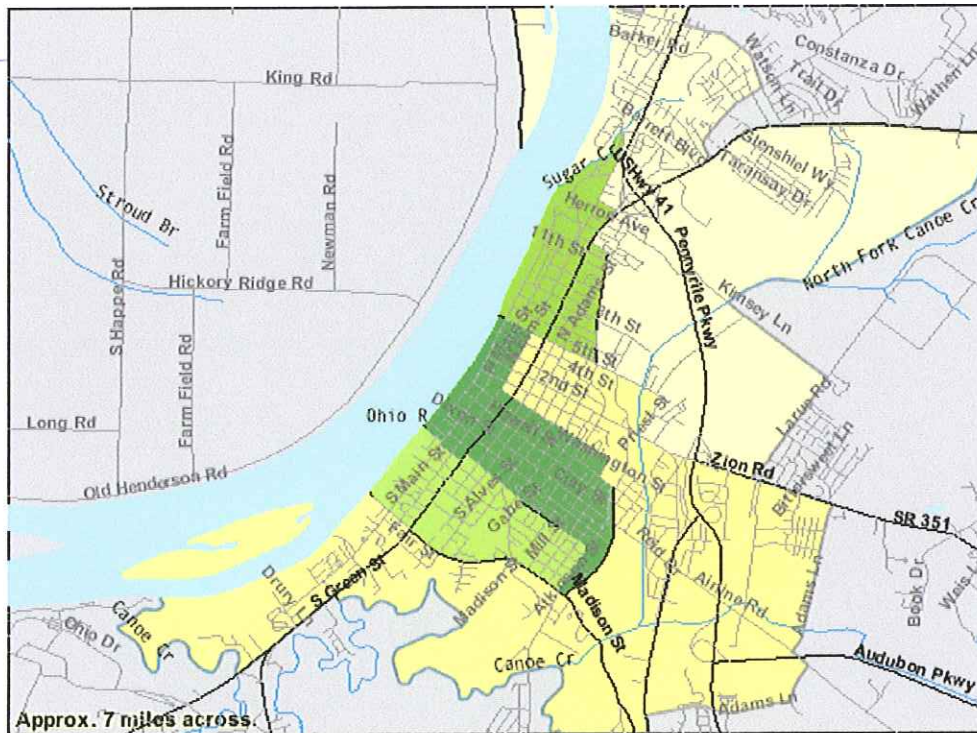
Legend

Data Classes

Percent	
16.5 - 16.5	(Lightest yellow)
26.2 - 27.5	(Yellow)
29.3 - 29.3	(Light green)
30.6 - 30.6	(Medium green)
36.9 - 38.9	(Darkest green)

Features

- Major Road
- Street
- Stream/Waterbody
- Stream/Waterbody



Source: U.S. Census Bureau, Census 2000 Summary File 3, Matrix P42.

U.S. Census Bureau
American FactFinder

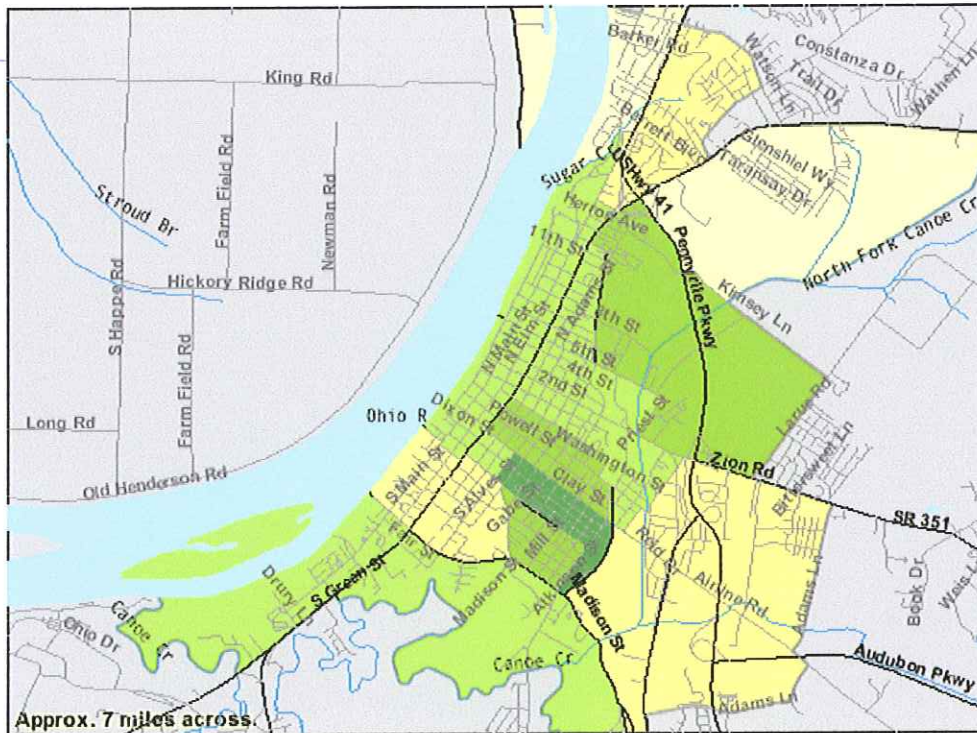


TM-P046. Percent of Persons 21 to 64 Years With a Disability: 2000
 Universe: Civilian noninstitutionalized population 21 to 64 years
 Data Set: Census 2000 Summary File 3 (SF 3) - Sample Data
Henderson CCD, Henderson County, Kentucky by Block Group

NOTE: Data based on a sample except in P3, P4, H3, and H4. For information on confidentiality protection, sampling error, nonsampling error, definitions, and count corrections see <http://factfinder.census.gov/home/en/datanotes/expsf3.htm>.

Legend

- Data Classes**
- Percent
- 10.4 - 13.0
 - 19.0 - 25.2
 - 27.5 - 30.6
 - 34.8 - 36.9
 - 45.9 - 45.9
- Features**
- Major Road
 - Street
 - Stream/Waterbody
 - Stream/Waterbody



Source: U.S. Census Bureau, Census 2000 Summary File 3, Matrix P42.

U.S. Census Bureau
American FactFinder



TM-P047. Percent of Persons 65 Years and Over With a Disability: 2000
Universe: **Civilian noninstitutionalized population 65 years and over**
Data Set: **Census 2000 Summary File 3 (SF 3) - Sample Data**
United States by State

NOTE: Data based on a sample except in P3, P4, H3, and H4. For information on confidentiality protection, sampling error, nonsampling error, definitions, and count corrections see <http://factfinder.census.gov/home/en/datanotes/expf3.htm>.

Legend

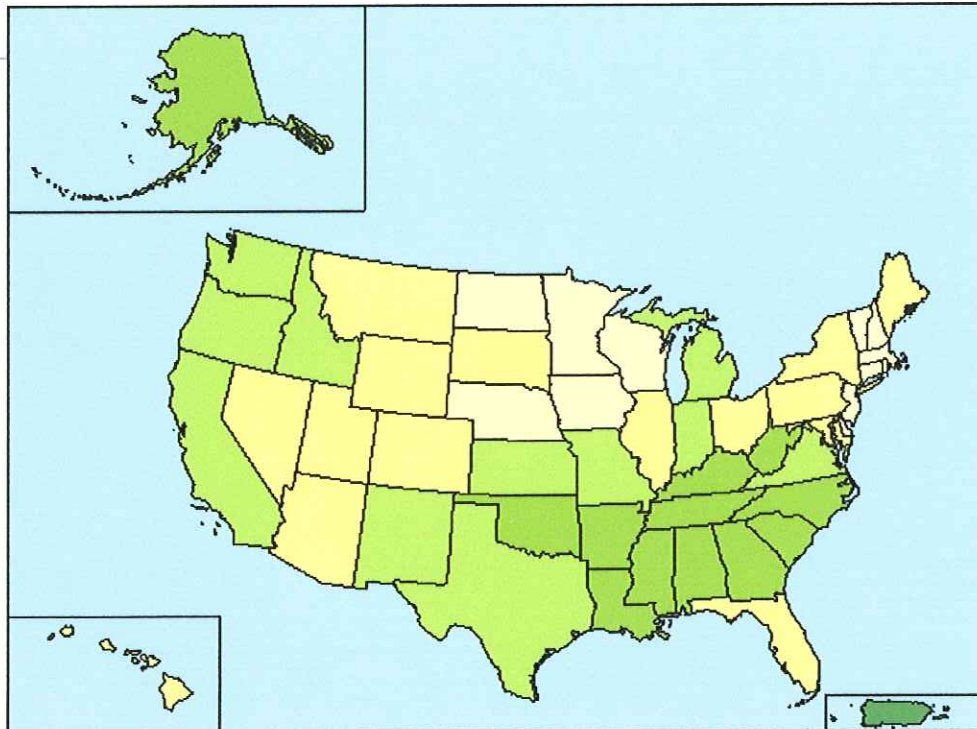
Data Classes

Percent
36.5 - 38.6
39.3 - 41.1
41.5 - 44.8
45.7 - 51.7
59.1 - 59.1

Features

- Major Road
- Street
- Stream/Waterbody

Items in gray text are not visible at this zoom level



Source: U.S. Census Bureau, Census 2000 Summary File 3, Matrix P42.

U.S. Census Bureau
American FactFinder

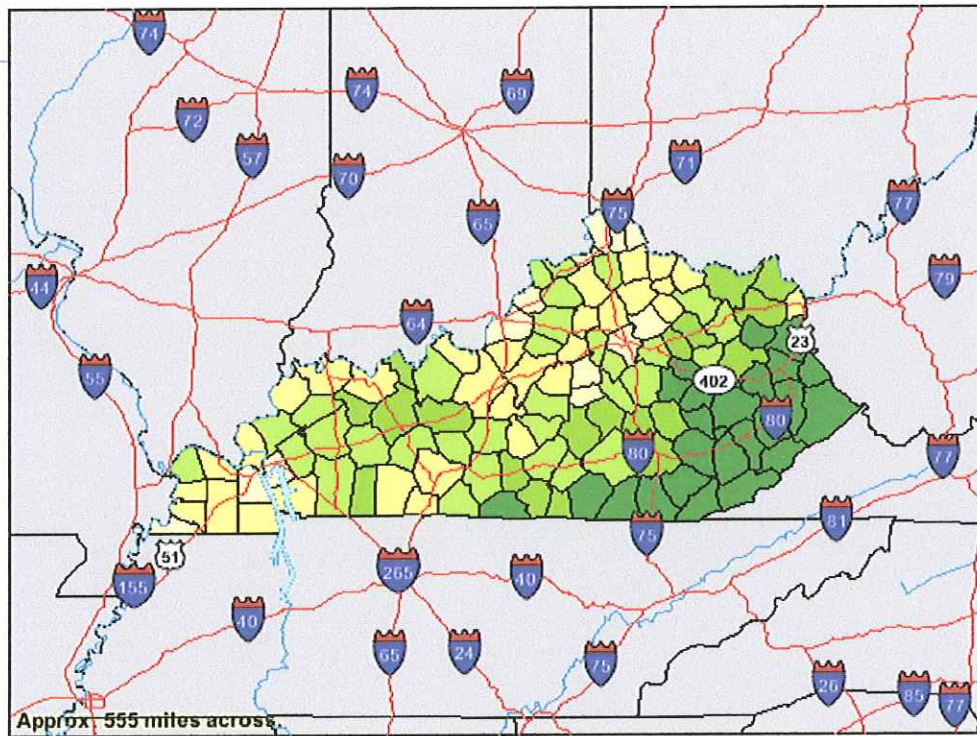


TM-P047. Percent of Persons 65 Years and Over With a Disability: 2000
 Universe: Civilian noninstitutionalized population 65 years and over
 Data Set: Census 2000 Summary File 3 (SF 3) - Sample Data
Kentucky by County

NOTE: Data based on a sample except in P3, P4, H3, and H4. For information on confidentiality protection, sampling error, nonsampling error, definitions, and count corrections see <http://factfinder.census.gov/home/en/datanotes/expsf3.htm>.

Legend

- Data Classes**
- Percent
- 39.1 - 44.6
 - 45.1 - 49.2
 - 49.7 - 53.8
 - 54.4 - 59.9
 - 60.7 - 70.5
- Features**
- Major Road
 - Street
 - Stream/Waterbody
 - Stream/Waterbody
- Items in gray text are not visible at this zoom level



Source: U.S. Census Bureau, Census 2000 Summary File 3, Matrix P42.

U.S. Census Bureau
American FactFinder



TM-P047. Percent of Persons 65 Years and Over With a Disability: 2000
 Universe: Civilian noninstitutionalized population 65 years and over
 Data Set: Census 2000 Summary File 3 (SF 3) - Sample Data
Henderson County, Kentucky by County Subdivision

NOTE: Data based on a sample except in P3, P4, H3, and H4. For information on confidentiality protection, sampling error, nonsampling error, definitions, and count corrections see <http://factfinder.census.gov/home/en/datanotes/expsf3.htm>.

Legend

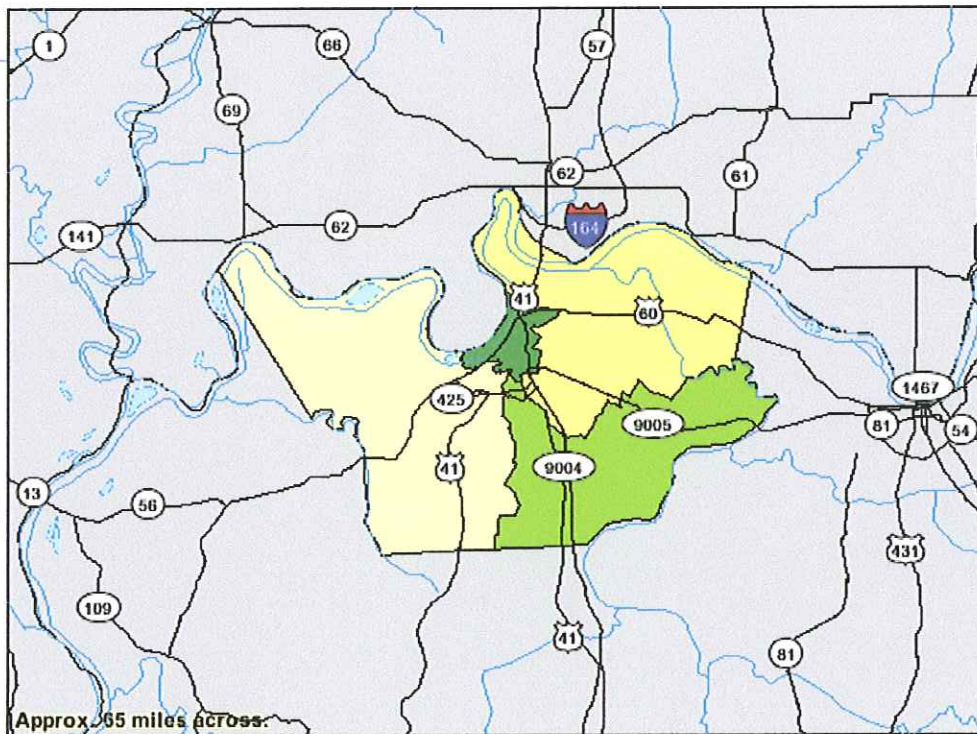
Data Classes

Percent	
	37.8 - 37.8
	39.7 - 39.7
	48.3 - 48.3
	54.5 - 54.5

Features

- Major Road
- Street
- Stream/Waterbody
- Stream/Waterbody

Items in graytext are not visible at this zoom level



Source: U.S. Census Bureau, Census 2000 Summary File 3, Matrix P42.

U.S. Census Bureau
American FactFinder



TM-P047. Percent of Persons 65 Years and Over With a Disability: 2000
 Universe: Civillan noninstitutionalized population 65 years and over
 Data Set: Census 2000 Summary File 3 (SF 3) - Sample Data
Henderson CCD, Henderson County, Kentucky by Census Tract

NOTE: Data based on a sample except in P3, P4, H3, and H4. For information on confidentiality protection, sampling error, nonsampling error, definitions, and count corrections see <http://factfinder.census.gov/home/en/datanotes/expsf3.htm>.

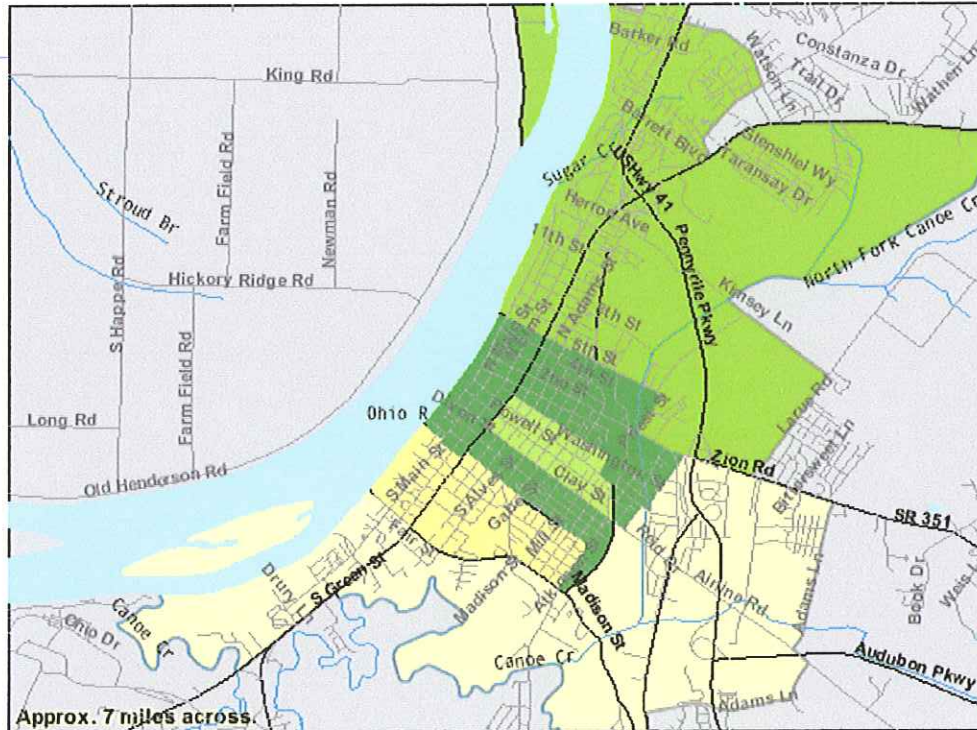
Legend

Data Classes

Percent	
47.2 - 47.2	Lightest Yellow
47.5 - 47.5	Yellow
52.5 - 52.5	Light Green
56.1 - 56.7	Medium Green
63.0 - 63.6	Dark Green

Features

- Major Road
- Street
- Stream/Waterbody
- Stream/Waterbody



Source: U.S. Census Bureau, Census 2000 Summary File 3, Matrix P42.

U.S. Census Bureau
American FactFinder

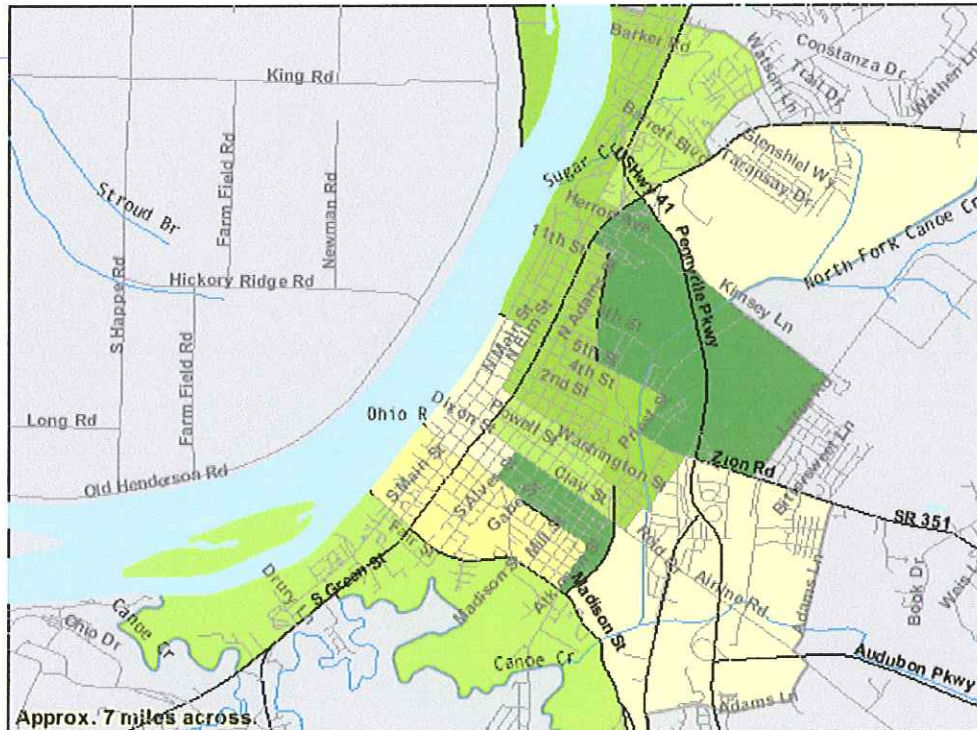


TM-P047. Percent of Persons 65 Years and Over With a Disability: 2000
 Universe: Civilian noninstitutionalized population 65 years and over
 Data Set: Census 2000 Summary File 3 (SF 3) - Sample Data
Henderson CCD, Henderson County, Kentucky by Block Group

NOTE: Data based on a sample except in P3, P4, H3, and H4. For information on confidentiality protection, sampling error, nonsampling error, definitions, and count corrections see <http://factfinder.census.gov/home/en/datanotes/expsf3.htm>.

Legend

- Data Classes**
- | Percent |
|-------------|
| 42.2 - 45.0 |
| 47.4 - 47.6 |
| 50.7 - 52.5 |
| 56.7 - 63.6 |
| 75.9 - 76.5 |
- Features**
- Major Road
 - Street
 - Stream/Waterbody
 - Stream/Waterbody



Source: U.S. Census Bureau, Census 2000 Summary File 3, Matrix P42.

U.S. Census Bureau
American FactFinder



TM-P067. Percent of Persons Below the Poverty Level in 1999: 2000
Universe: **Total population**
Data Set: **Census 2000 Summary File 3 (SF 3) - Sample Data**
United States by State

NOTE: Data based on a sample except in P3, P4, H3, and H4. For information on confidentiality protection, sampling error, nonsampling error, definitions, and count corrections see <http://factfinder.census.gov/home/en/datanotes/expsf3.htm>.

Legend

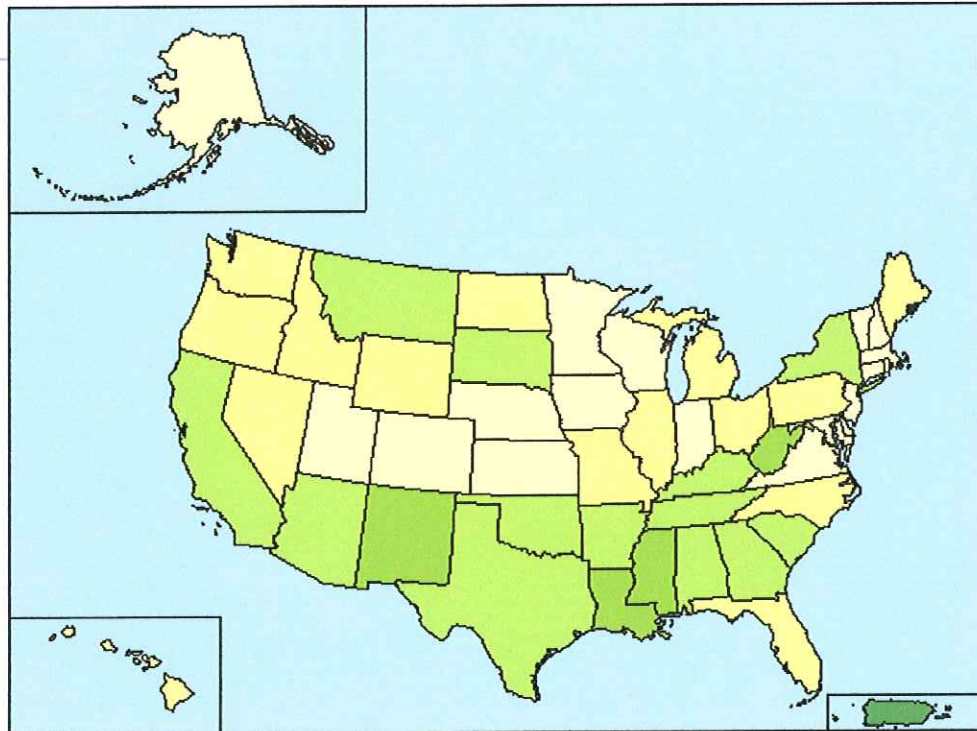
Data Classes

Percent
6.5 - 9.9
10.5 - 12.5
13.0 - 16.1
17.9 - 20.2
48.2 - 48.2

Features

- Major Road
- Street
- Stream/Waterbody

Items in gray text are not visible at this zoom level



Source: U.S. Census Bureau, Census 2000 Summary File 3, Matrix P87.

U.S. Census Bureau
American FactFinder



TM-P067. Percent of Persons Below the Poverty Level in 1999: 2000
 Universe: **Total population**
 Data Set: **Census 2000 Summary File 3 (SF 3) - Sample Data**
Kentucky by County

NOTE: Data based on a sample except in P3, P4, H3, and H4. For information on confidentiality protection, sampling error, nonsampling error, definitions, and count corrections see <http://factfinder.census.gov/home/en/datanotes/expsf3.htm>.

Legend

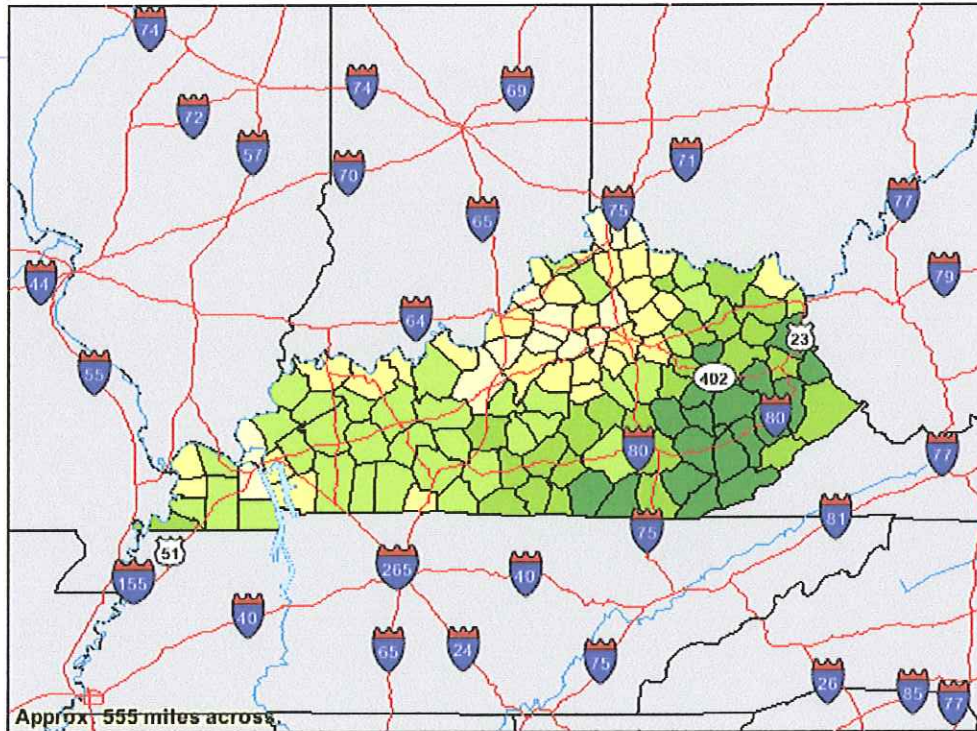
Data Classes

- Percent
- 4.1 - 10.3
 - 10.5 - 14.1
 - 14.7 - 19.7
 - 21.1 - 28.5
 - 29.1 - 45.4

Features

- Major Road
- Street
- Stream/Waterbody
- Stream/Waterbody

Items in gray text are not visible at this zoom level



Source: U.S. Census Bureau, Census 2000 Summary File 3, Matrix P87.

U.S. Census Bureau
American FactFinder



TM-P067. Percent of Persons Below the Poverty Level in 1999: 2000
Universe: **Total population**
Data Set: **Census 2000 Summary File 3 (SF 3) - Sample Data**
Henderson County, Kentucky by County Subdivision

NOTE: Data based on a sample except in P3, P4, H3, and H4. For information on confidentiality protection, sampling error, nonsampling error, definitions, and count corrections see <http://factfinder.census.gov/home/en/datanotes/expsf3.htm>.

Legend

Data Classes

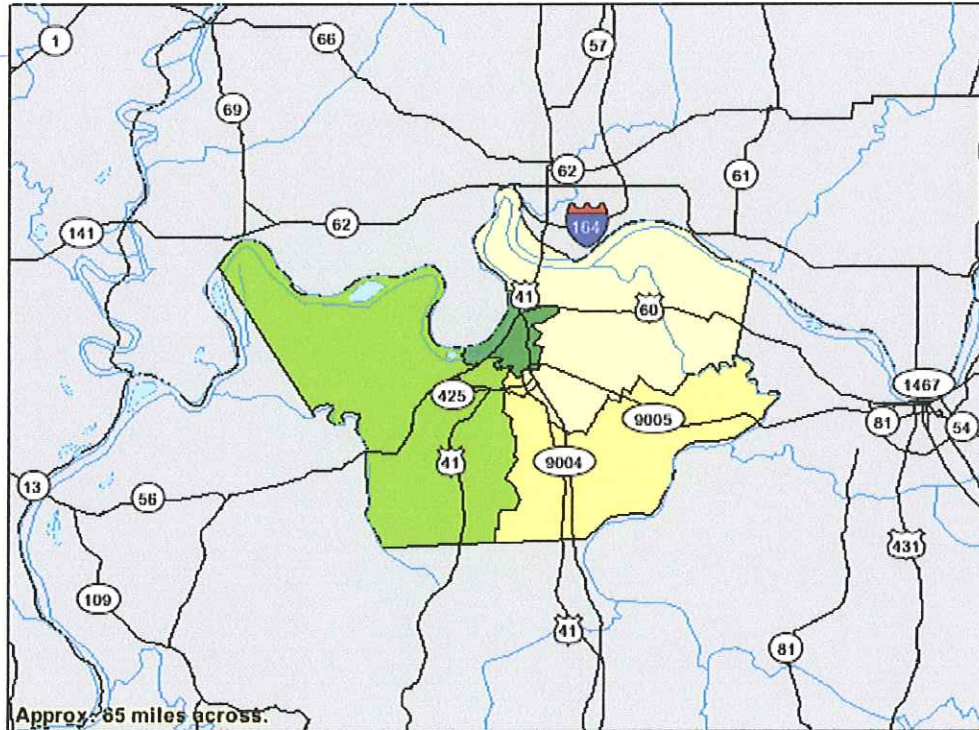
Percent

- 5.9 - 5.9
- 6.8 - 6.8
- 7.2 - 7.2
- 18.8 - 18.8

Features

- Major Road
- Street
- Stream/Waterbody
- Stream/Waterbody

Items in graytext are not visible at this zoom level



Source: U.S. Census Bureau, Census 2000 Summary File 3, Matrix P87.

U.S. Census Bureau
American FactFinder



TM-P067. Percent of Persons Below the Poverty Level in 1999: 2000
 Universe: Total population
 Data Set: Census 2000 Summary File 3 (SF 3) - Sample Data
Henderson CCD, Henderson County, Kentucky by Census Tract

NOTE: Data based on a sample except in P3, P4, H3, and H4. For information on confidentiality protection, sampling error, nonsampling error, definitions, and count corrections see <http://factfinder.census.gov/home/en/datanotes/expsf3.htm>

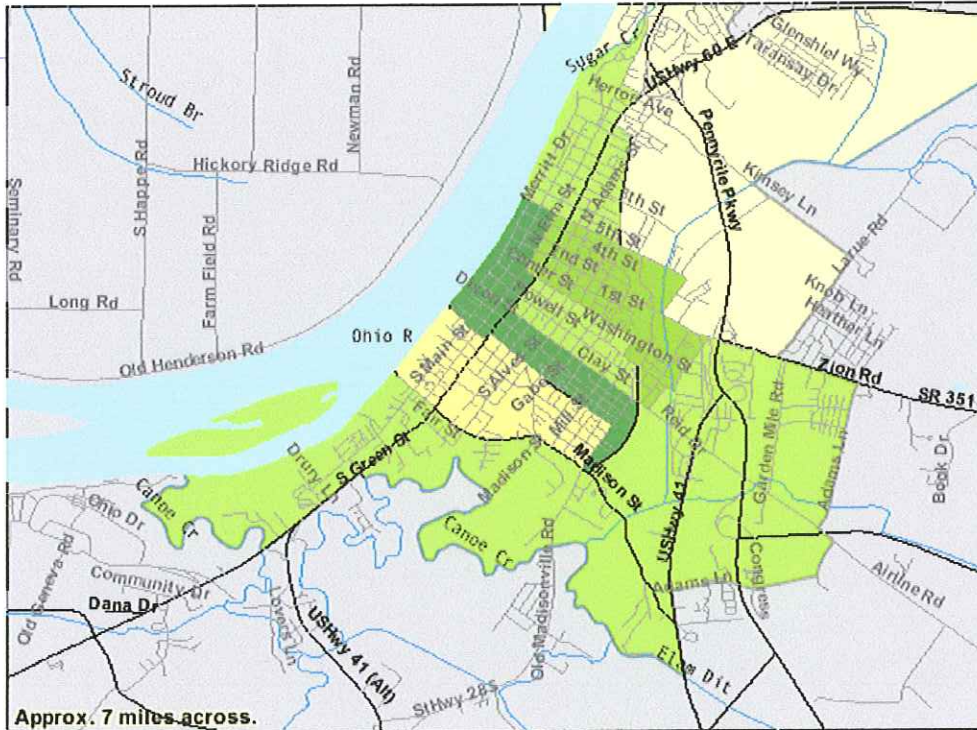
Legend

Data Classes

- Percent
- 9.4 - 9.4
 - 18.5 - 18.5
 - 20.6 - 22.0
 - 25.4 - 25.4
 - 29.7 - 29.7

Features

- Major Road
- Street
- Stream/Waterbody
- Stream/Waterbody



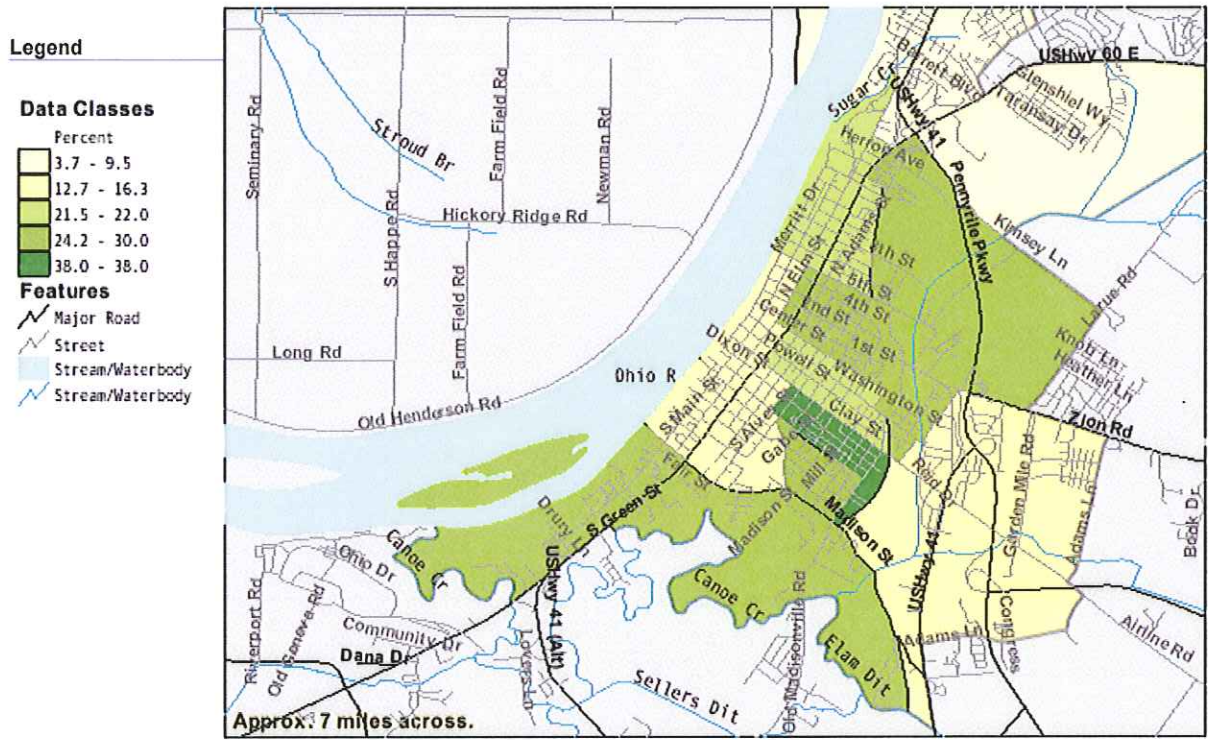
Source: U.S. Census Bureau, Census 2000 Summary File 3, Matrix P87.

U.S. Census Bureau
American FactFinder



TM-P067. Percent of Persons Below the Poverty Level in 1999: 2000
 Universe: Total population
 Data Set: Census 2000 Summary File 3 (SF 3) - Sample Data
Henderson CCD, Henderson County, Kentucky by Block Group

NOTE: Data based on a sample except in P3, P4, H3, and H4. For information on confidentiality protection, sampling error, nonsampling error, definitions, and count corrections see <http://factfinder.census.gov/home/en/datanotes/expsf3.htm>.



Source: U.S. Census Bureau, Census 2000 Summary File 3, Matrix P87.

Appendix C

HENDERSON COUNTY, KENTUCKY ENVIRONMENTAL JUSTICE DATA

REGION	TOTAL POPULATION	WHITE ALONE	% WHITE ALONE	BLACK OR AFRICAN AMERICAN ALONE	% BLACK OR AFRICAN AMERICAN ALONE	AMERICAN INDIAN & ALASKA NATIVE ALONE	% AMERICAN INDIAN & ALASKA NATIVE ALONE	ASIAN ALONE	% ASIAN ALONE	NATIVE HAWAIIAN & OTHER PACIFIC ISLANDER ALONE	% NATIVE HAWAIIAN & OTHER PACIFIC ISLANDER ALONE
United States	281,421,906	211,353,725	75.10%	34,361,740	12.21%	2,447,989	0.87%	10,171,820	3.61%	378,782	0.13%
Kentucky	4,041,769	3,639,168	90.04%	293,915	7.27%	9,080	0.22%	28,994	0.72%	1,155	0.03%
Henderson County	44,829	40,705	90.80%	3,197	7.13%	38	0.08%	251	0.56%	8	0.02%
Census Tract 201	1,739	1,417	81.48%	300	17.25%	9	0.52%	0	0.00%	0	0.00%
Block Group 1	1,739	1,417	81.48%	300	17.25%	9	0.52%	0	0.00%	0	0.00%
Census Tract 202	1,720	1,454	84.53%	238	13.84%	0	0.00%	0	0.00%	0	0.00%
Block Group 1	1,720	1,454	84.53%	238	13.84%	0	0.00%	0	0.00%	0	0.00%
Census Tract 203	2,022	1,599	79.08%	381	18.84%	0	0.00%	0	0.00%	0	0.00%
Block Group 1	2,022	1,599	79.08%	381	18.84%	0	0.00%	0	0.00%	0	0.00%
Census Tract 204	2,587	1,994	77.08%	538	20.80%	5	0.19%	0	0.00%	0	0.00%
Block Group 1	1,593	1,253	78.66%	300	18.83%	5	0.31%	0	0.00%	0	0.00%
Block Group 2	994	741	74.55%	238	23.94%	0	0.00%	0	0.00%	0	0.00%
Census Tract 205	2,509	2,130	84.89%	285	11.36%	0	0.00%	9	0.36%	0	0.00%
Block Group 2	1,251	1,037	82.89%	194	15.51%	0	0.00%	0	0.00%	0	0.00%
Census Tract 206.01	6,373	5,782	90.73%	359	5.63%	7	0.11%	65	1.02%	0	0.00%
Block Group 2	2,342	2,012	85.91%	211	9.01%	0	0.00%	0	0.00%	0	0.00%
Block Group 3	1,412	1,279	90.58%	89	6.30%	0	0.00%	39	2.76%	0	0.00%
Census Tract 206.02	4,428	3,779	85.34%	558	12.60%	0	0.00%	52	1.17%	0	0.00%
Block Group 1	2,142	1,735	81.00%	350	16.34%	0	0.00%	26	1.21%	0	0.00%
Census Tract 209	7,239	6,870	94.90%	287	3.96%	6	0.08%	4	0.06%	0	0.00%
Block Group 3	958	958	100.00%	0	0.00%	0	0.00%	0	0.00%	0	0.00%
Source: www.census.gov											
Data Set: Census 2000 Summary File 3 (SF 3)											
Detailed Tables: P1-Total Population; P6-Race; P7-Hispanic or Latino by Race; P8-Sex by Age; P87-Poverty Status in 1999 by Age; P42-Sex by Age by Disability Status											

This Page Intentionally Left Blank